

Product datasheet for **AP02380PU-N**

G3BP (G3BP1) pSer232 Rabbit Polyclonal Antibody

Product data:

Product Type:	Primary Antibodies
Applications:	IF, IHC, WB
Recommended Dilution:	Western blot: 1/500 - 1/1000; Incubate membrane with diluted antibody in 5% nonfat milk, 1X TBS, 0,1% Tween-20 at 4°C with gentle shaking, overnight. Immunohistochemistry on paraffin sections: 1/50 - 1/100. Immunofluorescence: 1/100 - 1/200.
Reactivity:	Human
Host:	Rabbit
Clonality:	Polyclonal
Immunogen:	Synthetic phosphopeptide derived from human G3BP-1 around the phosphorylation site of serine 232 (S-S-SP-P-A).
Specificity:	G3BP-1 (phospho-Ser232) antibody detects endogenous levels of G3BP-1 only when phosphorylated at serine 232.
Formulation:	PBS (without Mg ²⁺ and Ca ²⁺), pH 7.4, 150 mM NaCl containing 0.02% Sodium Azide as preservative and 50% Glycerol as stabilizer State: Aff - Purified State: Liquid purified Ig fraction
Concentration:	lot specific
Purification:	Immunoaffinity chromatography
Conjugation:	Unconjugated
Storage:	Store the antibody (in aliquots) at -20°C. Avoid repeated freezing and thawing.
Stability:	Shelf life: One year from despatch.
Gene Name:	G3BP stress granule assembly factor 1
Database Link:	Entrez Gene 10146 Human Q13283



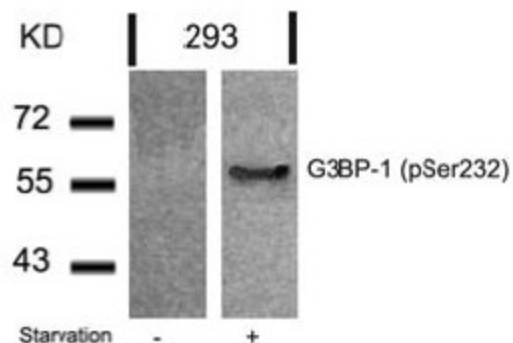
[View online »](#)

Background:

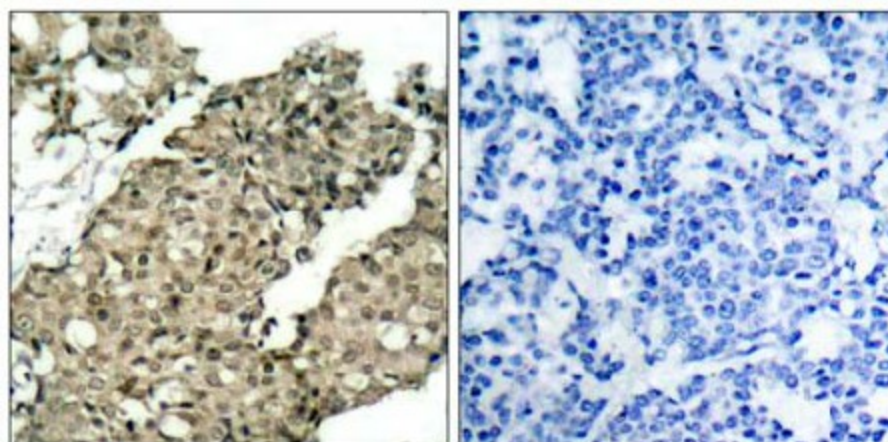
G3BP is one of the DNA-unwinding enzymes which prefers partially unwound 3'-tailed substrates and can also unwind partial RNA/DNA and RNA/RNA duplexes in an ATP-dependent fashion. This enzyme is a member of the heterogeneous nuclear RNA-binding proteins and is also an element of the Ras signal transduction pathway. It binds specifically to the Ras-GTPase-activating protein by associating with its SH3 domain. Several alternatively spliced transcript variants of this gene have been described, but the full-length nature of some of these variants has not been determined.

Synonyms:

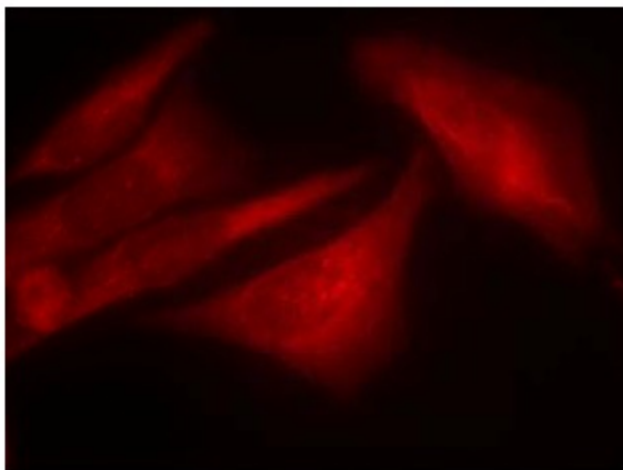
G3BP-1, hDH VIII

Product images:

Western Blot analysis of extracts from 239 cells untreated or treated with starvation using G3BP-1 (pSer232) Antibody



Immunohistochemical staining of paraffin-embedded human breast carcinoma tissue using G3BP-1 (pSer232) antibody (left) or the same antibody reincubated with blocking peptide (right)



Immunofluorescence staining of methanol-fixed HeLa cells using G3BP-1 (pSer232) Antibody