

## Product datasheet for **AP02377PU-N**

### Her2 (ERBB2) pTyr1248 Rabbit Polyclonal Antibody

#### Product data:

Product Type:	Primary Antibodies
Applications:	IF, IHC, WB
Recommended Dilution:	<b>Western blot:</b> 1/500-1/1000. Incubate membrane with diluted antibody in 5% nonfat milk, 1X TBS, 0,1% Tween-20 at 4°C with gentle shaking, overnight. <b>Immunofluorescence:</b> 1/100-1/200. <b>Immunohistochemistry on Paraffin Sections:</b> 1/50-1/100.
Reactivity:	Human, Mouse, Rat
Host:	Rabbit
Clonality:	Polyclonal
Immunogen:	Synthetic phosphopeptide derived from Human HER2 around the phosphorylation site of Tyrosine 1248 (P-E-Yp-L-G).
Specificity:	This antibody detects endogenous levels of HER2 only when phosphorylated at Tyrosine1248.
Formulation:	PBS (without Mg <sup>2+</sup> and Ca <sup>2+</sup> ), pH 7.4, 150 mM NaCl State: Aff - Purified State: Liquid purified Ig fraction Preservative: no BSA/AMINES, and no glycerol.
Concentration:	lot specific
Purification:	Immunoaffinity Chromatography
Conjugation:	Unconjugated
Storage:	Store undiluted at 2-8°C for one month or (in aliquots) at -20°C for longer. Avoid repeated freezing and thawing.
Stability:	Shelf life: one year from despatch.
Predicted Protein Size:	185 kDa (Predicted)
Gene Name:	erb-b2 receptor tyrosine kinase 2
Database Link:	<a href="#">Entrez Gene 2064 Human P04626</a>



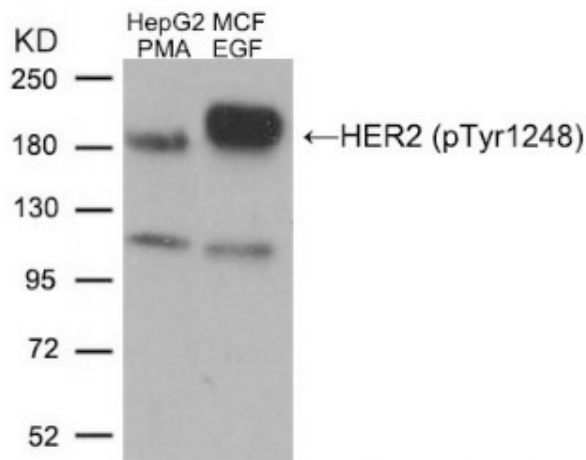
[View online »](#)

**Background:**

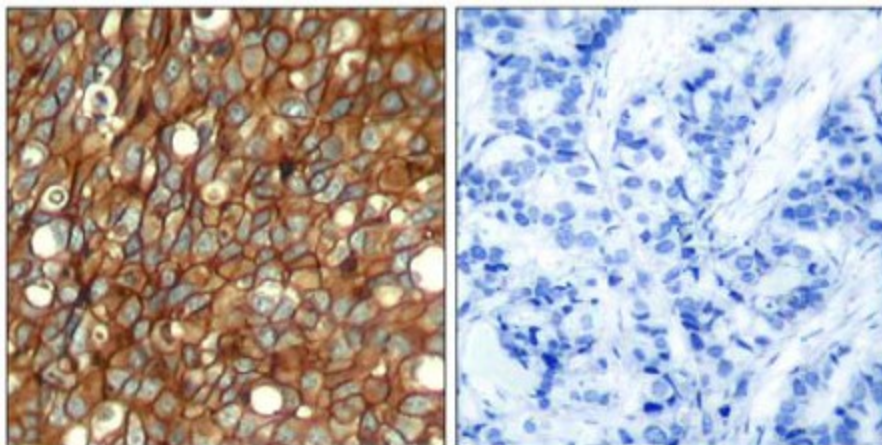
ErbB 2 is a receptor tyrosine kinase of the ErbB 2 family. It is closely related in structure to the epidermal growth factor receptor. ErbB 2 oncoprotein is detectable in a proportion of breast and other adenocarcinomas, as well as transitional cell carcinomas. In the case of breast cancer, expression determined by immunohistochemistry has been shown to be associated with poor prognosis.

**Synonyms:**

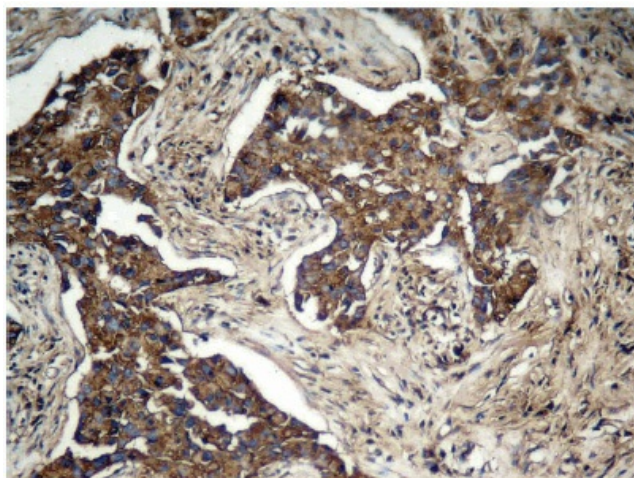
HER-2, NEU, p185erbB2, NGL, c-erbB-2, MNL19

**Product images:**


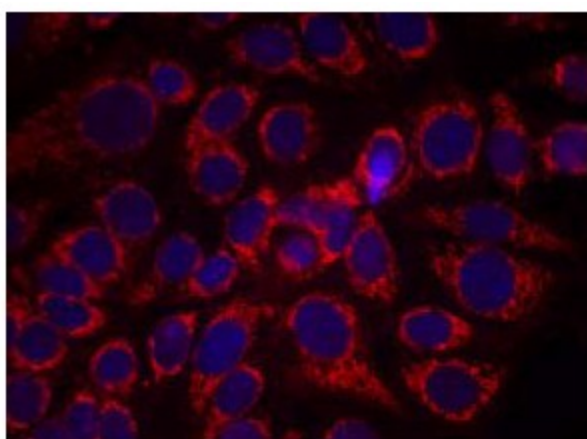
Western blot analysis of extracts from HepG2 cells treated with PMA and MCF cells treated with EGF, using CD340 / ERBB2 / HER2 Antibody (pTyr1248).



Immunohistochemical analysis of paraffin-embedded human breast carcinoma tissue using CD340 / ERBB2 / HER2 Antibody (pTyr1248) (left) or the same antibody preincubated with blocking peptide (right).



Immunohistochemical analysis of paraffin-embedded human lung carcinoma tissue, using CD340 / ERBB2 / HER2 Antibody (pTyr1248)



Immunofluorescence staining of methanol-fixed MCF7 cells using CD340 / ERBB2 / HER2 Antibody (pTyr1248)