

Product datasheet for **AP02376PU-N**

PKC mu (PRKD1) pSer738 Rabbit Polyclonal Antibody

Product data:

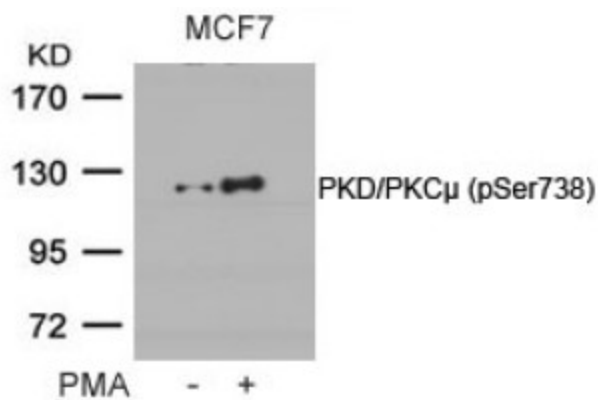
Product Type:	Primary Antibodies
Applications:	IF, WB
Recommended Dilution:	Western Blot: 1/500 - 1/1000; Incubate membrane with diluted antibody in 5% nonfat milk, 1X TBS, 0,1% Tween-20 at 4°C with gentle shaking, overnight. Immunofluorescence: 1/100 - 1/200.
Reactivity:	Human, Mouse, Rat
Host:	Rabbit
Clonality:	Polyclonal
Immunogen:	Synthetic phosphopeptide derived from human PKD/PKC μ around the phosphorylation site of serine 738 (E-K-SP-F-R).
Specificity:	PKD/PKC μ (phospho-Ser738) antibody detects endogenous levels of PKD/PKC μ only when phosphorylated at serine 738.
Formulation:	PBS (without Mg ²⁺ and Ca ²⁺), pH 7.4, 150 mM NaCl containing 0.02% Sodium Azide as preservative and 50% Glycerol as stabilizer State: Aff - Purified State: Liquid purified Ig fraction
Concentration:	lot specific
Purification:	Immunoaffinity chromatography
Conjugation:	Unconjugated
Storage:	Store the antibody (in aliquots) at -20°C. Avoid repeated freezing and thawing.
Stability:	Shelf life: One year from despatch.
Gene Name:	protein kinase D1
Database Link:	Entrez Gene 5587 Human Q15139
Background:	Converts transient diacylglycerol. (DAG) signals into prolonged physiological effects, downstream of PKC. Involved in resistance to oxidative stress through activation of NF-kappa-B.



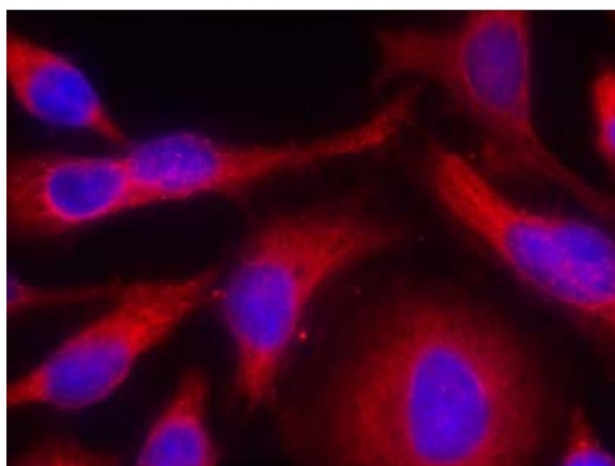
[View online »](#)

Synonyms: Protein kinase D, PKC D1, PKD, PKD1, PRKCM, nPKC-D1, nPKC-mu, PKC mu, Protein kinase C mu type

Product images:



Western Blot analysis of extracts from MCF cells untreated or treated with PMA using PKD/PKC μ (pSer728) Antibody



Immunofluorescence staining of methanol-fixed HeLa cells using PKD/PKC μ (pSer738) antibody