

Product datasheet for **AP02371PU-N**

Estrogen Receptor 1 (ESR1) pSer167 Rabbit Polyclonal Antibody

Product data:

Product Type:	Primary Antibodies
Applications:	IF, IHC, WB
Recommended Dilution:	Western blot: 1/500 - 1/1000; Incubate membrane with diluted antibody in 5% nonfat milk, 1X TBS, 0,1% Tween-20 at 4°C with gentle shaking, overnight. Immunohistochemistry on paraffin sections: 1/50 - 1/100. Immunofluorescence: 1/100 - 1/200.
Reactivity:	Human, Mouse
Host:	Rabbit
Clonality:	Polyclonal
Immunogen:	Peptide sequence around phosphorylation site of serine 167 (L-A-S(p)-T-N) derived from Human Estrogen Receptor-alpha.
Specificity:	Estrogen Receptor-alpha (phospho-Ser167) antibody detects endogenous levels of Estrogen Receptor-alpha only when phosphorylated at serine167.
Formulation:	PBS (without Mg ²⁺ and Ca ²⁺), pH 7.4, 150 mM NaCl, 0.02% Sodium Azide and 50% Glycerol. State: Aff - Purified State: Liquid purified Ig fraction.
Concentration:	lot specific
Purification:	Immunoaffinity chromatography.
Conjugation:	Unconjugated
Storage:	Store the antibody (in aliquots) at -20°C. Avoid repeated freezing and thawing.
Stability:	Shelf life: One year from despatch.
Gene Name:	estrogen receptor 1
Database Link:	Entrez Gene 2099 Human P03372



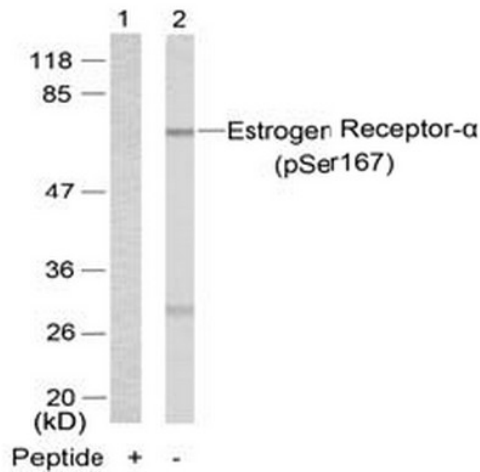
[View online »](#)

Background:

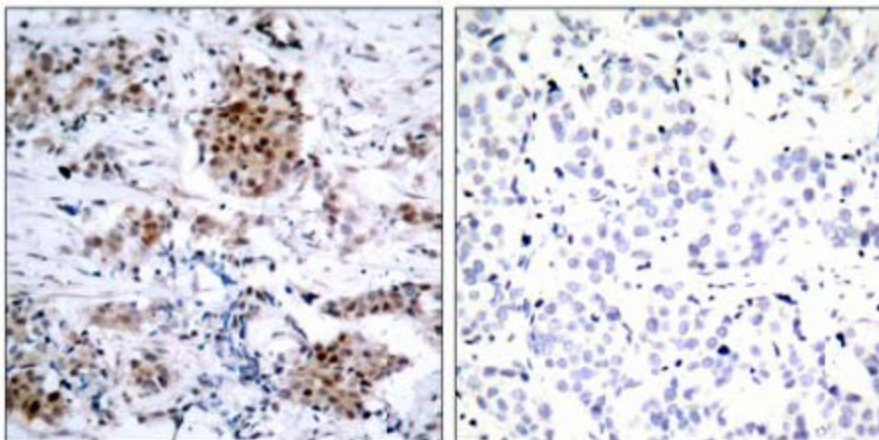
Estrogen Receptor alpha is a 65 kDa protein and a member of the steroid family of nuclear receptors. Estrogen Receptor alpha is a ligand-activated transcription factor that, when bound to estrogen, induces a conformational change that allows dimerization and binding to estrogen response element sequences. When bound to DNA, Estrogen Receptor alpha can positively or negatively regulate gene transcription. Like other steroid hormone receptors, Estrogen Receptors are intracellular proteins. Estrogen Receptors play an important role in regulating mammary gland growth and differentiation. Breast tumors that are ER positive may also show a more favorable response to anti-estrogen therapies.

Synonyms:

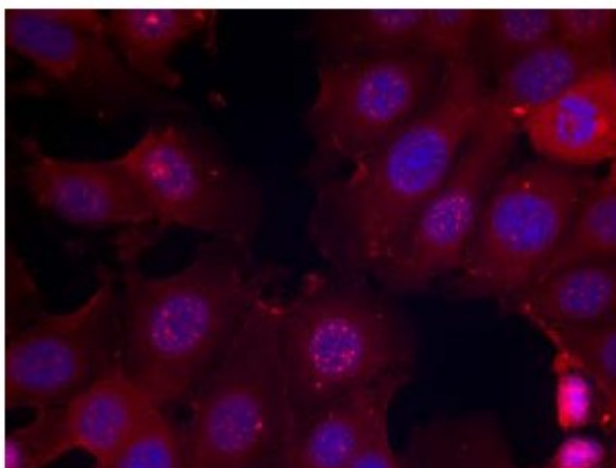
ER alpha, Estradiol receptor, ESR1, ESR, NR3A1

Product images:


Western Blot analysis of extracts from MCF7 cells using Estrogen Receptor-alpha (pSer167) antibody (Lane 2) and the same antibody preincubated with blocking peptide (Lane 1)



Immunohistochemical analysis of paraffin-embedded human breast carcinoma tissue using Estrogen Receptor-alpha (pSer167) antibody (left) or the same antibody preincubated with blocking peptide (right)



Immunofluorescence staining of methanol-fixed MCF cells using Estrogen Receptor-Alpha (pSer167) antibody