

## Product datasheet for **AP02359PU-N**

### CD61 (ITGB3) pTyr773 Rabbit Polyclonal Antibody

#### Product data:

Product Type:	Primary Antibodies
Applications:	IHC, WB
Recommended Dilution:	Suitable for use in Western blot (1:500~1:1000) and Immunohistochemistry (1:50~1:100).
Reactivity:	Human, Mouse
Host:	Rabbit
Clonality:	Polyclonal
Immunogen:	The antiserum was produced against synthesized phosphopeptide derived from human Integrin $\beta$ 3 around the phosphorylation site of tyrosine 773 (P-L-YP-K-E).
Specificity:	The antibody was affinity-purified from rabbit antiserum by affinity-chromatography using epitope-specific phosphopeptide. The antibody against non-phosphopeptide was removed by chromatography using non-phosphopeptide corresponding to the phosphorylation site. Integrin $\beta$ 3 (phospho-Tyr773) antibody detects endogenous levels of Integrin $\beta$ 3 only when phosphorylated at tyrosine 773.
Formulation:	Phosphate buffered saline (without $Mg^{2+}$ and $Ca^{2+}$ ), pH 7.4, 150 mM NaCl, 0.02% Sodium Azide and 50% Glycerol. State: Aff - Purified State: Liquid purified Ig fraction.
Concentration:	lot specific
Purification:	Immunoaffinity chromatography.
Conjugation:	Unconjugated
Storage:	Store the antibody (in aliquots) at $-20^{\circ}C$ . Avoid repeated freezing and thawing.
Stability:	Shelf life: One year from despatch.
Gene Name:	integrin subunit beta 3
Database Link:	<a href="#">Entrez Gene 3690 Human P05106</a>



[View online »](#)

**Background:**

Human Integrin beta 3 (CD61) antigen is a 90-110 kDa glycoprotein polypeptide which is expressed on platelets, megakaryocytes, macrophages, osteoclasts and synovial lining cells. The platelet glycoprotein is the integrin beta 3 chain of the vitronectin receptor and GPIIb/IIIa complex.

**Synonyms:**

Integrin beta-3, GP3A, GPIIIa

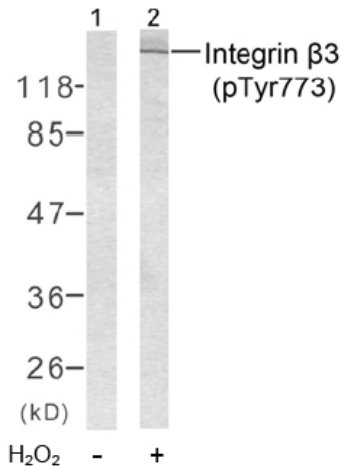
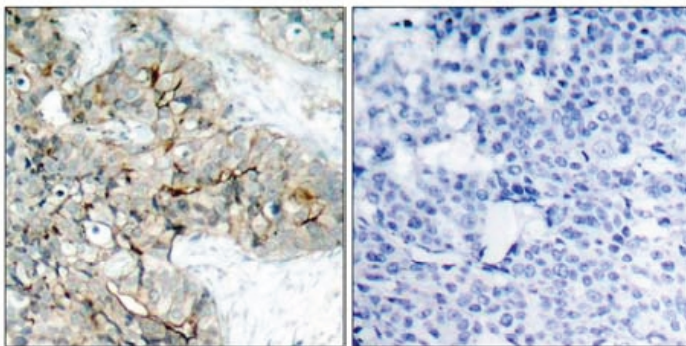
**Product images:**


Figure 2. Western blot analysis of extracts from HL-60 cells using Integrin  $\beta$ 3 (phospho-Tyr773) antibody.



P-Peptide                      -                      +

Figure 1. Immunohistochemical analysis of paraffin-embedded human breast carcinoma tissue using Integrin  $\beta$ 3 (phospho-Tyr773) antibody.