

Product datasheet for **AP02354PU-N**

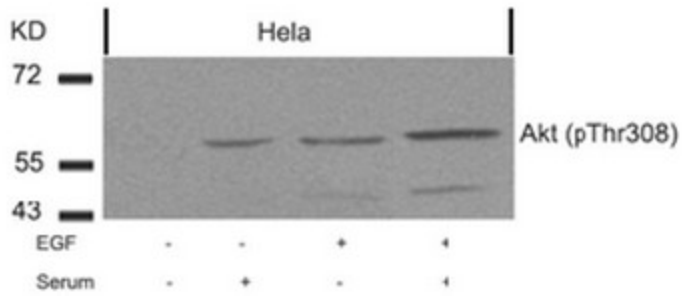
AKT1 pThr308 Rabbit Polyclonal Antibody

Product data:

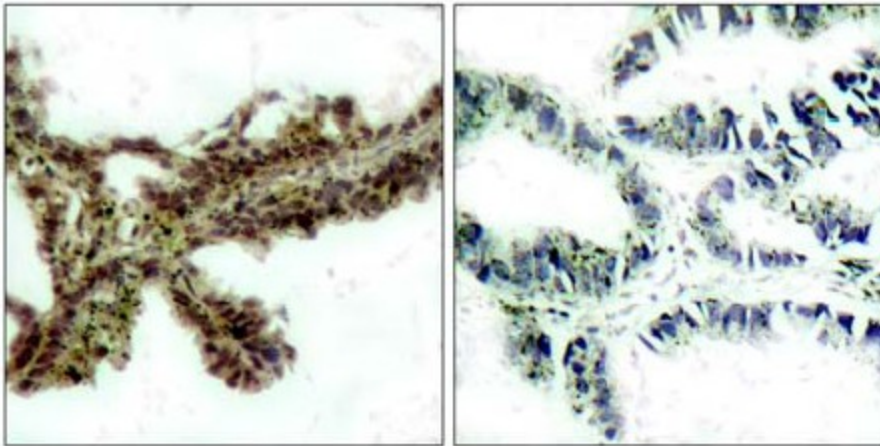
Product Type:	Primary Antibodies
Applications:	IF, IHC, WB
Recommended Dilution:	Western blot: 1/500 - 1/1000; Incubate membrane with diluted antibody in 5% nonfat milk, 1X TBS, 0,1% Tween-20 at 4°C with gentle shaking, overnight. Immunohistochemistry on paraffin sections: 1/50 - 1/100. Immunofluorescence: 1/100 - 1/200.
Reactivity:	Human, Mouse
Host:	Rabbit
Clonality:	Polyclonal
Immunogen:	Synthetic phosphopeptide derived from human Akt around the phosphorylation site of threonine 308 (M-K-Tp-F-C).
Specificity:	Akt (phospho-Thr308) antibody detects endogenous levels of Akt only when phosphorylated at threonine 308.
Formulation:	Phosphate buffered saline (without Mg ²⁺ and Ca ²⁺), pH 7.4, 150 mM NaCl containing 0.02% Sodium Azide as preservative and 50% Glycerol as stabilizer State: Aff - Purified State: Liquid purified Ig fraction
Concentration:	lot specific
Purification:	Immunoaffinity chromatography
Conjugation:	Unconjugated
Storage:	Upon receipt, store undiluted (in aliquots) at -20°C. Avoid repeated freezing and thawing.
Stability:	Shelf life: one year from despatch.
Gene Name:	AKT serine/threonine kinase 1
Database Link:	Entrez Gene 207 Human P31749
Synonyms:	Akt-1, RAC-PK-alpha, Protein kinase B, C-AKT



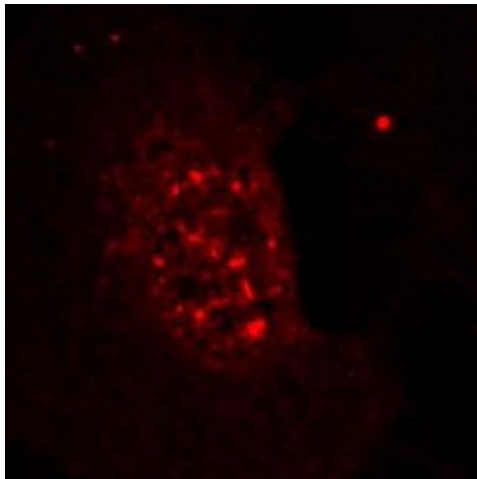
[View online »](#)

Product images:


Western Blot analysis of extracts from HeLa cells untreated or treated with EGF serum or both using AKT (pThr308) Antibody



Immunohistochemical analysis of paraffin-embedded human lung carcinoma tissue, using Akt (pThr308) antibody (left) or the same antibody preincubated with blocking peptide (right)



Immunofluorescence staining of methanol-fixed HeLa cells showing nuclear dot staining using AKT (pThr308) Antibody