

Product datasheet for **AP02353PU-S**

AKT1 pSer473 Rabbit Polyclonal Antibody

Product data:

Product Type:	Primary Antibodies
Applications:	IHC, WB
Recommended Dilution:	Western Blot: 1/500-1/1000. Incubate membrane with diluted antibody in 5% nonfat milk, 1xTBS, 0.1% Tween-20 at 4°C with gentle shaking, overnight. Immunohistochemistry on Paraffin Sections: 1/50-1/100.
Reactivity:	Human, Mouse, Rat
Host:	Rabbit
Clonality:	Polyclonal
Immunogen:	Peptide Sequence around the phosphorylation site of Ser473 (Q-F- S -Y-S) derived from Human Akt
Specificity:	This antibody detects endogenous levels of Akt only when phosphorylated at Serine 473.
Formulation:	PBS (without Mg ²⁺ and Ca ²⁺), pH 7.4, containing 150 mM NaCl, 0.02% Sodium Azide and 50% glycerol. State: Aff - Purified State: Liquid purified Ig fraction.
Concentration:	lot specific
Purification:	Immunoaffinity Chromatography using epitope-specific phosphopeptide. The antibody against non-phosphopeptide was removed by chromatography using non-phosphopeptide corresponding to the phosphorylation site.
Conjugation:	Unconjugated
Storage:	Store the antibody (in aliquots) at -20°C. Avoid repeated freezing and thawing.
Stability:	Shelf life: One year from despatch.
Gene Name:	AKT serine/threonine kinase 1
Database Link:	Entrez Gene 207 Human P31749



[View online »](#)

Background:

The PKB (RAC/akt) protein kinases are a family of second messenger-regulated serine/threonine kinases.

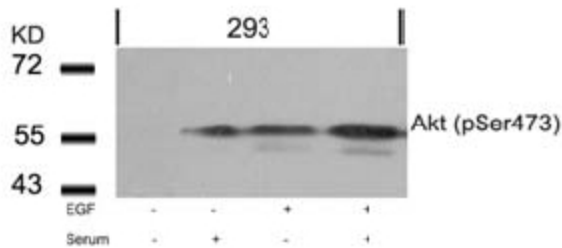
Three mammalian isoforms (alpha, beta, gamma) have been identified so far; the alpha-isoform being the cellular homologue of the v-akt oncogene. Stimulation of cells with growth factors leads to activation of PKB by a phosphoinositide-3-kinase dependent signal transduction pathway.

Synonyms:

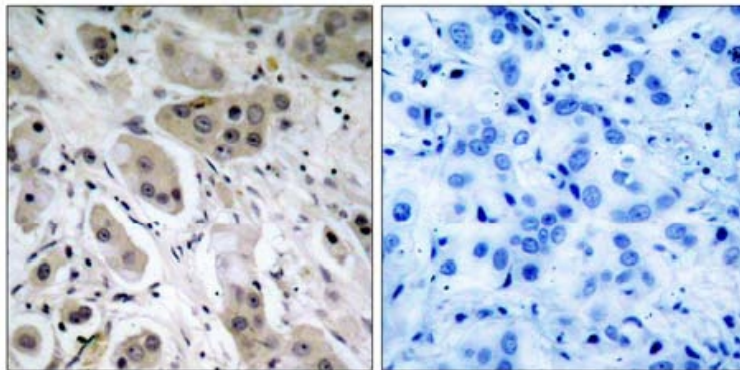
Akt-1, RAC-PK-alpha, Protein kinase B, C-AKT

Note:

Molecular Weight: 60 kDa

Product images:


Western Blot analysis of extracts from 293 cells untreated or treated with EGF, Serum or both using Akt (phospho-Ser473) antibody.



P-Peptide

-

+

Immunohistochemical analysis of paraffin-embedded human breast carcinoma tissue, using Akt (phospho-Ser473) antibody.