

## Product datasheet for **AP02349PU-N**

### STAT6 pTyr641 Rabbit Polyclonal Antibody

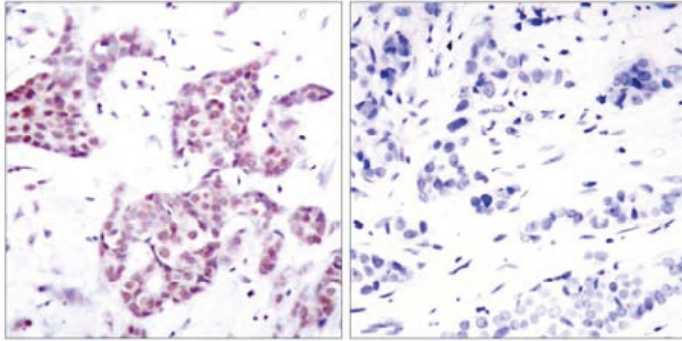
#### Product data:

Product Type:	Primary Antibodies
Applications:	IHC, WB
Recommended Dilution:	Suitable for use in Western blot (1:500~1:1000) and Immunohistochemistry (1:50~1:100).
Reactivity:	Human
Host:	Rabbit
Clonality:	Polyclonal
Immunogen:	The antiserum was produced against synthesized phosphopeptide derived from human STAT6 around the phosphorylation site of Tyrosine 641 (R-G-YP-V-P).
Specificity:	The antibody was affinity-purified from rabbit antiserum by affinity-chromatography using epitope-specific phosphopeptide. The antibody against non-phosphopeptide was removed by chromatography using non-phosphopeptide corresponding to the phosphorylation site. STAT6 (phospho-Tyr641) antibody detects endogenous levels of STAT6 only when phosphorylated at tyrosine 641.
Formulation:	Phosphate buffered saline (without Mg <sup>2+</sup> and Ca <sup>2+</sup> ), pH 7.4, 150 mM NaCl, 0.02% Sodium Azide and 50% glycerol. State: Aff - Purified State: Liquid purified Ig fraction.
Concentration:	lot specific
Purification:	Immunoaffinity chromatography.
Conjugation:	Unconjugated
Storage:	Store the antibody (in aliquots) at -20°C. Avoid repeated freezing and thawing.
Stability:	Shelf life: One year from despatch.
Gene Name:	signal transducer and activator of transcription 6
Database Link:	<a href="#">Entrez Gene 6778 Human P42226</a>
Synonyms:	IL-4 Stat



[View online »](#)

Product images:



P-Peptide                    -                    +

Figure 1. Immunohistochemical analysis of paraffin-embedded human breast carcinoma tissue using STAT6 (phospho- Tyr641) antibody.

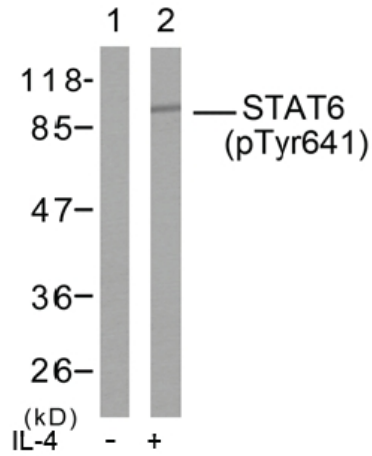


Figure 2. Immunohistochemical analysis of paraffin-embedded human breast carcinoma tissue using STAT6 (phospho- Tyr641) antibody.