

Product datasheet for **AP02348PU-N**

STAT5A pSer780 Rabbit Polyclonal Antibody

Product data:

| | |
|-----------------------|---|
| Product Type: | Primary Antibodies |
| Applications: | IHC, WB |
| Recommended Dilution: | Suitable for use in Western blot (1:500~1:1000) and Immunohistochemistry (1:50~1:100). |
| Reactivity: | Human, Mouse |
| Host: | Rabbit |
| Clonality: | Polyclonal |
| Immunogen: | The antiserum was produced against synthesized phosphopeptide derived from human STAT5A around the phosphorylation site of serine 780 (R-L-SP-P-P). |
| Specificity: | The antibody was affinity-purified from rabbit antiserum by affinity-chromatography using epitope-specific phosphopeptide. The antibody against non-phosphopeptide was removed by chromatography using non-phosphopeptide corresponding to the phosphorylation site. STAT5A (phospho-Ser780) antibody detects endogenous levels of STAT5A only when phosphorylated at serine 780. |
| Formulation: | Phosphate buffered saline (without Mg ²⁺ and Ca ²⁺), pH 7.4, 150 mM NaCl, 0.02% Sodium Azide and 50% glycerol. State: Aff - Purified State: Liquid purified Ig fraction. |
| Concentration: | lot specific |
| Purification: | Immunoaffinity chromatography. |
| Conjugation: | Unconjugated |
| Storage: | Store the antibody (in aliquots) at -20°C. Avoid repeated freezing and thawing. |
| Stability: | Shelf life: One year from despatch. |
| Gene Name: | signal transducer and activator of transcription 5A |
| Database Link: | Entrez Gene 6776 Human P42229 |
| Synonyms: | STAT-5, STAT-5A, Mammary gland factor, MGF |



[View online »](#)

Product images:

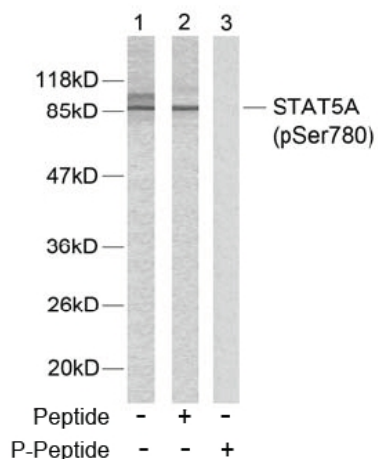
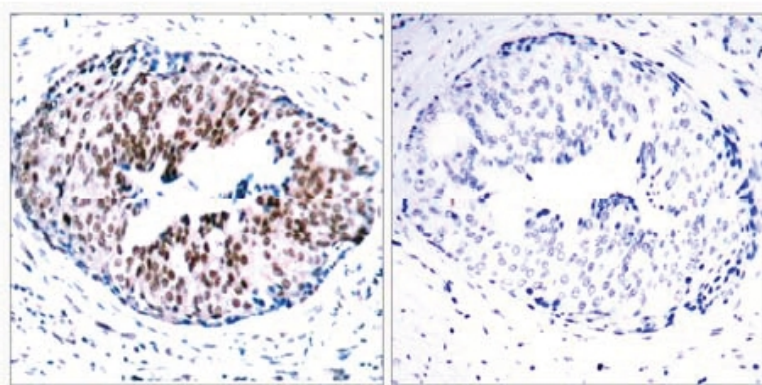


Figure 2. Western blot analysis of extracts from HeLa cells using STAT5A (phospho-Ser780) antibody.



P-Peptide - +

Figure 1. Immunohistochemical analysis of paraffin-embedded human breast carcinoma tissue using STAT5A (phospho-Ser780) antibody.