

Product datasheet for **AP02347PU-S**

STAT5A pTyr694 Rabbit Polyclonal Antibody

Product data:

Product Type:	Primary Antibodies
Applications:	IHC, WB
Recommended Dilution:	Western blot: 1/500-1/1000. Immunohistochemistry on Paraffin Sections: 1/50-1/100.
Reactivity:	Human, Mouse
Host:	Rabbit
Clonality:	Polyclonal
Immunogen:	Synthesized phosphopeptide derived from Human STAT5A around the phosphorylation site of Tyrosine 694 (D-G-Yp-V-K).
Specificity:	This antibody detects endogenous levels of STAT5A only when phosphorylated at Tyrosine 694.
Formulation:	PBS (without Mg ²⁺ and Ca ²⁺), pH 7.4, 150 M NaCl State: Aff - Purified State: Liquid purified Ig fraction Stabilizer: 50% Glycerol Preservative: 0.02% Sodium Azide
Concentration:	lot specific
Purification:	Immunoaffinity Chromatography using epitope-specific phosphopeptide. The antibody against non-phosphopeptide was removed by chromatography using non-phosphopeptide corresponding to the phosphorylation site.
Conjugation:	Unconjugated
Storage:	Store the antibody (in aliquots) at -20°C. Avoid repeated freezing and thawing.
Stability:	Shelf life: One year from despatch.
Predicted Protein Size:	90 kDa
Gene Name:	signal transducer and activator of transcription 5A
Database Link:	Entrez Gene 6776 Human P42229



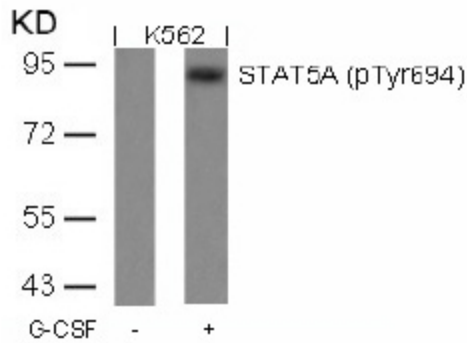
[View online »](#)

Background:

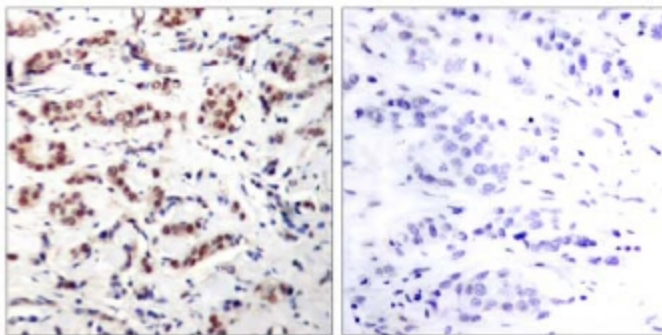
The STAT proteins serve as both cytoplasmic signal transducers and nuclear activators of transcription. STATs are mediators involved in cytokine signalling. In response to a specific cytokine signal, STAT proteins are phosphorylated on conserved tyrosine residues. Phosphorylated STAT proteins dimerize via their SH2 domains and move to the nucleus. The STAT dimers bind to specific DNA elements resulting in transcriptional regulation of downstream target genes. STAT5 is activated in response to prolactine, growth hormone, GM-CSF, and IL-2.

Synonyms:

STAT-5, STAT-5A, Mammary gland factor, MGF

Product images:


Western blot analysis of extracts from HeLa cells using STAT5A (phospho-Tyr694) antibody.



Immunohistochemical analysis of paraffin-embedded human breast carcinoma tissue using STAT5A (phospho-Tyr694) antibody