

## Product datasheet for **AP02346PU-N**

### STAT4 pTyr693 Rabbit Polyclonal Antibody

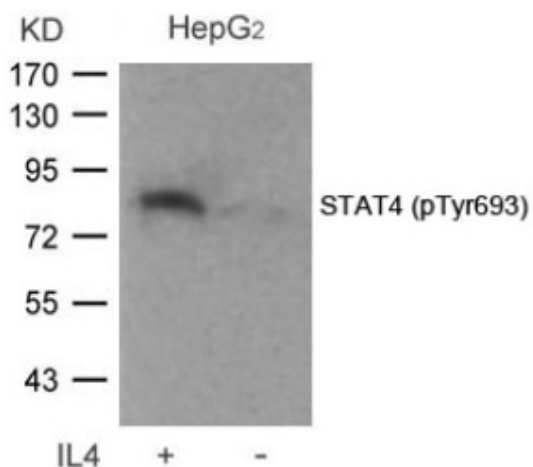
#### Product data:

Product Type:	Primary Antibodies
Applications:	IHC, WB
Recommended Dilution:	Western blot: 1/500 - 1/1000. Immunohistochemistry on paraffin sections: 1/50 - 1/100.
Reactivity:	Human, Mouse
Host:	Rabbit
Clonality:	Polyclonal
Immunogen:	The antiserum was produced against synthesized phosphopeptide derived from human STAT4 around the phosphorylation site of tyrosine 693 (K-G-YP-V-P).
Specificity:	The antibody was affinity-purified from rabbit antiserum by affinity-chromatography using epitope-specific phosphopeptide. The antibody against non-phosphopeptide was removed by chromatography using non-phosphopeptide corresponding to the phosphorylation site. STAT4 (phospho-Tyr693) antibody detects endogenous levels of STAT4 only when phosphorylated at tyrosine 693.
Formulation:	Phosphate buffered saline (without Mg <sup>2+</sup> and Ca <sup>2+</sup> ), pH 7.4, 150 mM NaCl, 0.02% Sodium Azide and 50% glycerol. State: Aff - Purified State: Liquid purified Ig fraction.
Concentration:	lot specific
Purification:	Immunoaffinity chromatography.
Conjugation:	Unconjugated
Storage:	Store the antibody (in aliquots) at -20°C. Avoid repeated freezing and thawing.
Stability:	Shelf life: One year from despatch.
Gene Name:	signal transducer and activator of transcription 4
Database Link:	<a href="#">Entrez Gene 6775 Human Q14765</a>
Synonyms:	OTTHUMP00000163553; SLEB11



[View online »](#)

Product images:



Western blot analysis of extracts from HepG2 cells untreated or treated with IL-4 using STAT4 (phospho-Tyr693) Antibody

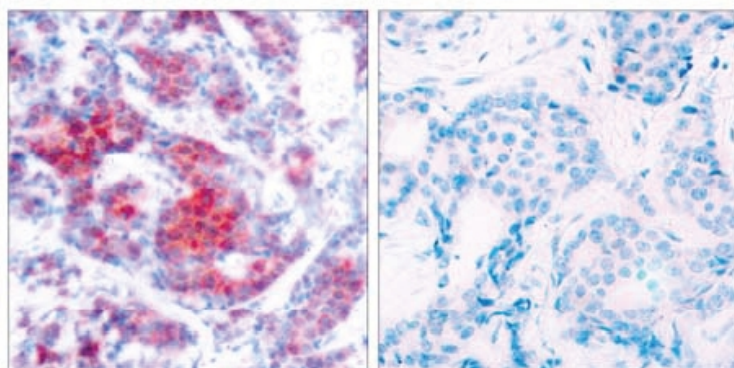


Figure 1. Immunohistochemical analysis of paraffin-embedded human breast carcinoma tissue using STAT4 (phospho-Tyr693) antibody.

P-Peptide                    -                    +