

Product datasheet for **AP02345PU-S**

STAT3 pSer727 Rabbit Polyclonal Antibody

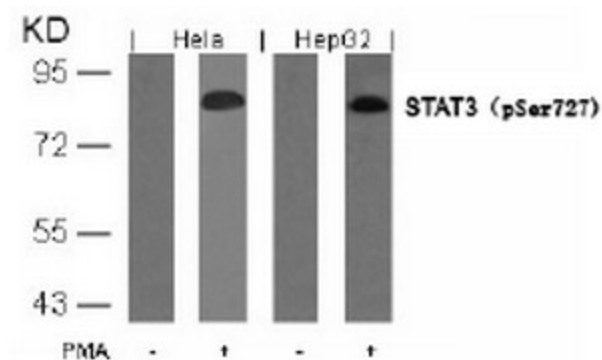
Product data:

Product Type:	Primary Antibodies
Applications:	IF, IHC, WB
Recommended Dilution:	Western blot: 1/500 - 1/1000; Incubate membrane with diluted antibody in 5% nonfat milk, 1X TBS, 0,1% Tween-20 at 4°C with gentle shaking, overnight. Immunohistochemistry on paraffin sections: 1/50 - 1/100. Immunofluorescence: 1/100 - 1/200.
Reactivity:	Human, Mouse
Host:	Rabbit
Clonality:	Polyclonal
Immunogen:	Synthetic phosphopeptide derived from human STAT3 around the phosphorylation site of serine 727 (P-M-SP-P-R).
Specificity:	STAT3 (phospho-Ser727) antibody detects endogenous levels of STAT3 only when phosphorylated at serine 727.
Formulation:	Phosphate buffered saline (without Mg ²⁺ and Ca ²⁺), pH 7.4, 150 mM NaCl containing 0.02% Sodium Azide as preservative and 50% glycerol as stabilizer State: Aff - Purified State: Liquid purified Ig fraction
Concentration:	lot specific
Purification:	Immunoaffinity chromatography
Conjugation:	Unconjugated
Storage:	Store the antibody (in aliquots) at -20°C. Avoid repeated freezing and thawing.
Stability:	Shelf life: One year from despatch.
Gene Name:	signal transducer and activator of transcription 3
Database Link:	Entrez Gene 6774 Human P40763
Synonyms:	STAT-3, Acute-phase response factor, APRF

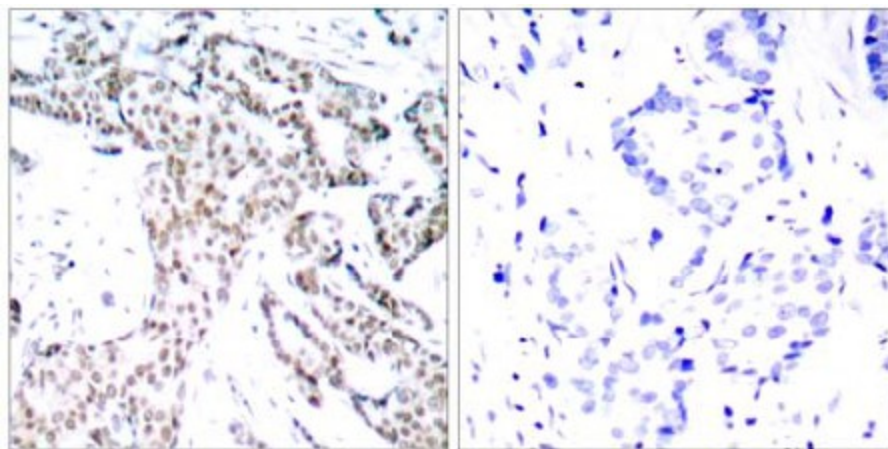


[View online »](#)

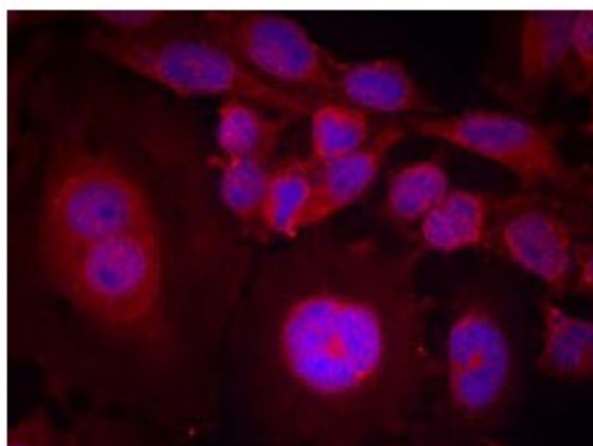
Product images:



Western Blot analysis of extracts from HeLa and HepG2 cells untreated or treated with PMA using STAT3 (pSer727) Antibody



Immunohistochemical analysis of paraffin-embedded human breast carcinoma tissue using STAT3 (pSer727) antibody (left) or the same antibody preincubated with blocking peptide (right)



Immunofluorescence staining of methanol-fixed HeLa cells using STAT3 (pSer727) Antibody