

Product datasheet for **AP02345PU-N**

STAT3 pSer727 Rabbit Polyclonal Antibody

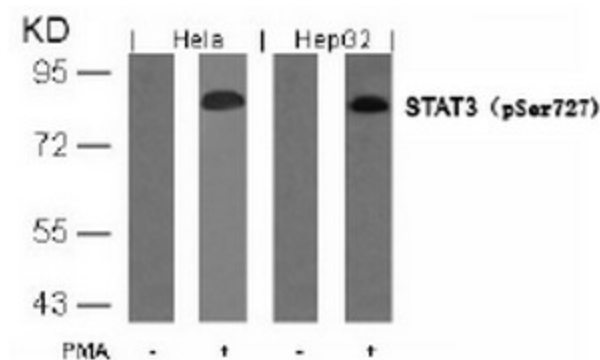
Product data:

| | |
|-----------------------|--|
| Product Type: | Primary Antibodies |
| Applications: | IF, IHC, WB |
| Recommended Dilution: | Western blot: 1/500 - 1/1000; Incubate membrane with diluted antibody in 5% nonfat milk, 1X TBS, 0,1% Tween-20 at 4°C with gentle shaking, overnight. Immunohistochemistry on paraffin sections: 1/50 - 1/100. Immunofluorescence: 1/100 - 1/200. |
| Reactivity: | Human, Mouse |
| Host: | Rabbit |
| Clonality: | Polyclonal |
| Immunogen: | Synthetic phosphopeptide derived from human STAT3 around the phosphorylation site of serine 727 (P-M-SP-P-R). |
| Specificity: | STAT3 (phospho-Ser727) antibody detects endogenous levels of STAT3 only when phosphorylated at serine 727. |
| Formulation: | Phosphate buffered saline (without Mg ²⁺ and Ca ²⁺), pH 7.4, 150 mM NaCl containing 0.02% Sodium Azide as preservative and 50% glycerol as stabilizer State: Aff - Purified State: Liquid purified Ig fraction |
| Concentration: | lot specific |
| Purification: | Immunoaffinity chromatography |
| Conjugation: | Unconjugated |
| Storage: | Store the antibody (in aliquots) at -20°C. Avoid repeated freezing and thawing. |
| Stability: | Shelf life: One year from despatch. |
| Gene Name: | signal transducer and activator of transcription 3 |
| Database Link: | Entrez Gene 6774 Human P40763 |
| Synonyms: | STAT-3, Acute-phase response factor, APRF |

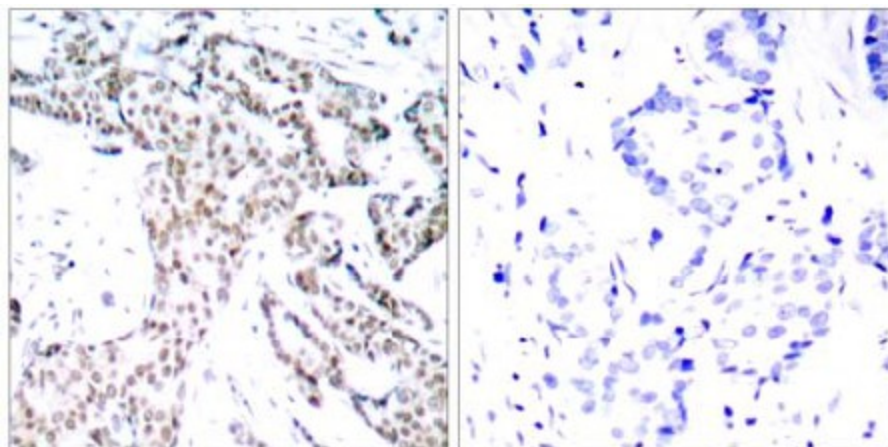


[View online »](#)

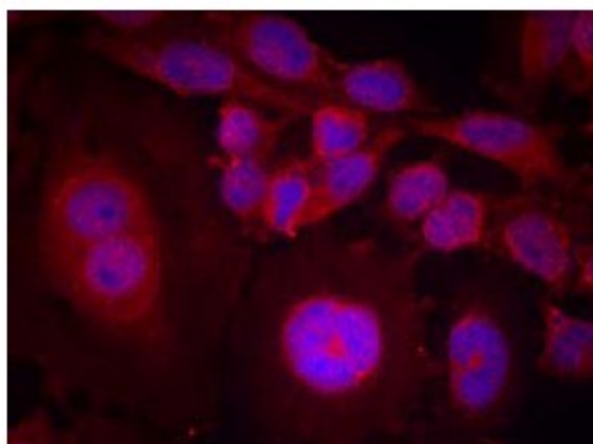
Product images:



Western Blot analysis of extracts from HeLa and HepG2 cells untreated or treated with PMA using STAT3 (pSer727) Antibody



Immunohistochemical analysis of paraffin-embedded human breast carcinoma tissue using STAT3 (pSer727) antibody (left) or the same antibody preincubated with blocking peptide (right)



Immunofluorescence staining of methanol-fixed HeLa cells using STAT3 (pSer727) Antibody