

## Product datasheet for **AP02344PU-S**

### STAT3 pTyr705 Rabbit Polyclonal Antibody

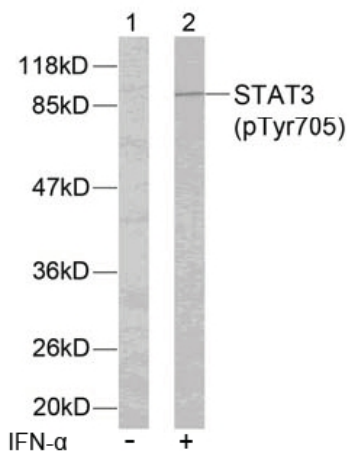
#### Product data:

Product Type:	Primary Antibodies
Applications:	IF, IHC, WB
Recommended Dilution:	<b>Western blot:</b> 1/500~1/1000. <b>Immunohistochemistry:</b> 1/50~1/100. <b>Immunofluorescence:</b> 1/100~1/200.
Reactivity:	Human, Mouse, Rat
Host:	Rabbit
Clonality:	Polyclonal
Immunogen:	Synthetic phosphopeptide, sequence around phosphorylation site of Tyrosine 705 (A-P-Y(p)-L-K), and KLH conjugates.
Specificity:	STAT3 (phospho-Tyr705) antibody detects endogenous levels of STAT3 only when phosphorylated at Tyrosine 705.
Formulation:	Phosphate buffered saline (without Mg <sup>2+</sup> and Ca <sup>2+</sup> ), pH 7.4, 150 mM NaCl, 0.02% Sodium Azide and 50% glycerol. State: Aff - Purified State: Liquid purified Ig fraction
Concentration:	lot specific
Purification:	Immunogen affinity chromatography using epitope-specific phospho peptide. Non-phospho specific antibodies were removed by chromatography using non-phospho peptide.
Conjugation:	Unconjugated
Storage:	Upon receipt, store undiluted (in aliquots) at -20°C. Avoid repeated freezing and thawing.
Stability:	Shelf life: one year from despatch.
Predicted Protein Size:	88 kDa
Database Link:	<a href="#">Entrez Gene 6774 Human P40763</a>
Synonyms:	STAT-3, Acute-phase response factor, APRF

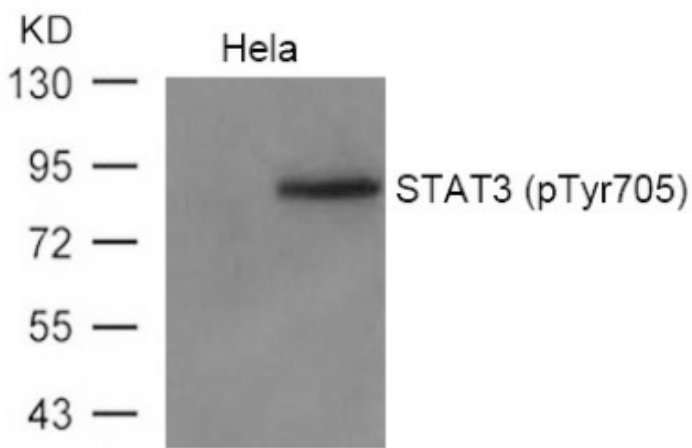


[View online »](#)

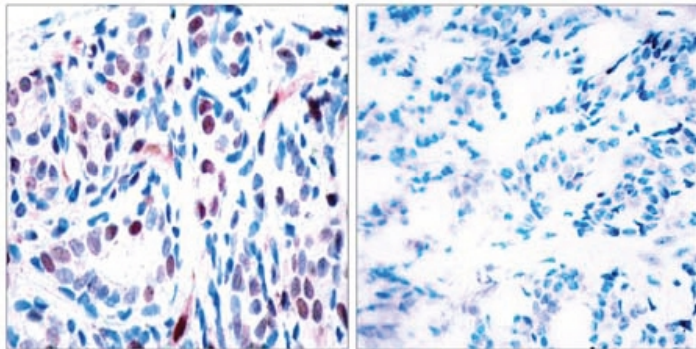
Product images:



Western blot analysis of extracts from HeLa cells using STAT3 (phospho-Tyr705) Antibody

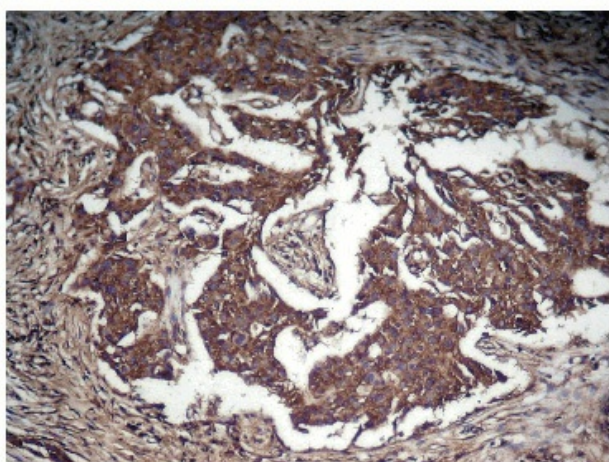


Western blot analysis of extracts from HeLa cells untreated or treated with IFN a using STAT3 (Phospho-Tyr705) Antibody

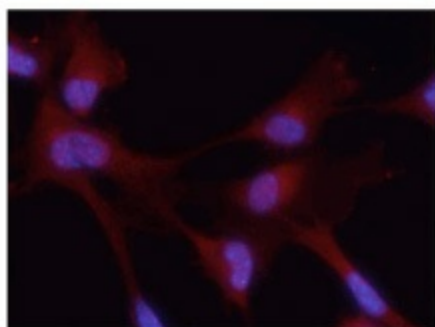


P-Peptide                      -                      +

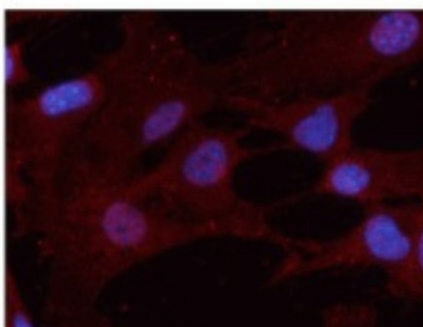
Immunohistochemical analysis of paraffin-embedded human breast carcinoma tissue using STAT3 (phospho-Tyr705) Antibody



Immunohistochemical analysis of paraffin-embedded human Lung carcinoma tissue using STAT3 (Phospho-Tyr705) Antibody



**untreated**



**IFN treated**

Immunofluorescence staining of methanol-fixed MEF cells untreated or treated with IFN using STAT3 (Phospho-Tyr705) Antibody