

## Product datasheet for **AP02343PU-S**

### STAT1 pTyr701 Rabbit Polyclonal Antibody

#### Product data:

Product Type:	Primary Antibodies
Applications:	IHC, WB
Recommended Dilution:	Suitable for use in Western blot (1:500-1:1000) and Immunohistochemistry (1:50-1:100).
Reactivity:	Human, Mouse, Rat
Host:	Rabbit
Clonality:	Polyclonal
Immunogen:	The antiserum was produced against synthesized phosphopeptide derived from human STAT1 around the phosphorylation site of tyrosine 701 (T-G-YP-I-K).
Specificity:	STAT1 (phospho-Tyr701) antibody detects endogenous levels of STAT1 only when phosphorylated at tyrosine 701.
Formulation:	Phosphate buffered saline (without Mg <sup>2+</sup> and Ca <sup>2+</sup> ), pH 7.4, 150 mM NaCl, 0.02% Sodium Azide and 50% glycerol State: Aff - Purified State: Liquid purified Ig fraction
Concentration:	lot specific
Purification:	The antibody was affinity-purified from rabbit antiserum by affinity-chromatography using epitope-specific phosphopeptide. The antibody against non-phosphopeptide was removed by chromatography using non-phosphopeptide corresponding to the phosphorylation site.
Conjugation:	Unconjugated
Storage:	Store the antibody (in aliquots) at -20°C. Avoid repeated freezing and thawing.
Stability:	Shelf life: One year from despatch.
Gene Name:	signal transducer and activator of transcription 1
Database Link:	<a href="#">Entrez Gene 6772 Human P42224</a>
Synonyms:	DKFZp686B04100; ISGF-3; OTTHUMP00000205845; STAT91



[View online »](#)

Product images:

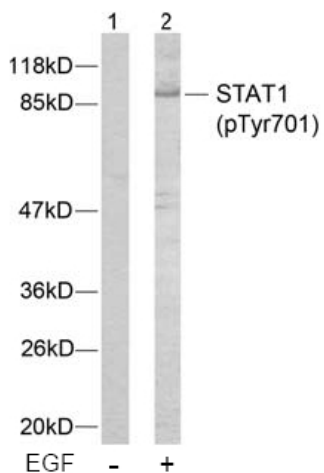
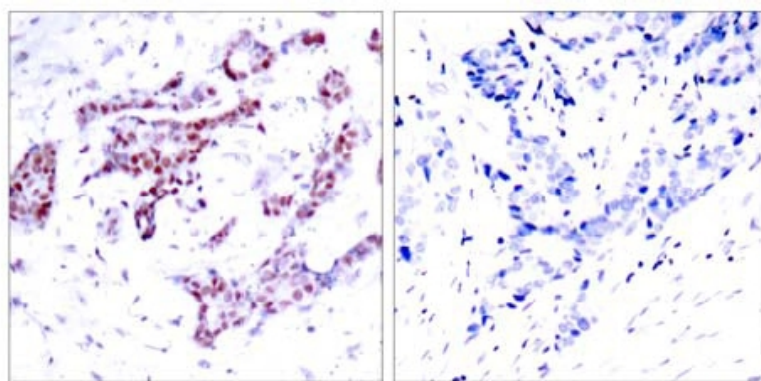


Figure 2. Western blot analysis of extracts from MCF7 cells using STAT1 (phospho-Tyr701) antibody AP02343PU.



P-Peptide - +

Figure 1. Immunohistochemical analysis of paraffin-embedded human breast carcinoma tissue using STAT1 (phospho-Tyr701) antibody AP02343PU.