

Product datasheet for **AP02337PU-N**

c-Myc (MYC) pSer373 Rabbit Polyclonal Antibody

Product data:

Product Type:	Primary Antibodies
Applications:	IHC
Recommended Dilution:	Suitable for use in Immunohistochemistry (1:50~1:100).
Reactivity:	Human, Mouse
Host:	Rabbit
Clonality:	Polyclonal
Immunogen:	The antiserum was produced against synthesized phosphopeptide derived from human Myc around the phosphorylation site of serine 373.
Specificity:	The antibody was affinity-purified from rabbit antiserum by affinity-chromatography using epitope-specific phosphopeptide. The antibody against non-phosphopeptide was removed by chromatography using non-phosphopeptide corresponding to the phosphorylation site. Myc (phospho-Ser373) antibody detects endogenous levels of Myc only when phosphorylated at serine 373.
Formulation:	Phosphate buffered saline (without Mg ²⁺ and Ca ²⁺), pH 7.4, 150 mM NaCl, 0.02% Sodium Azide and 50% glycerol. State: Aff - Purified State: Liquid purified Ig fraction.
Concentration:	lot specific
Purification:	Immunoaffinity chromatography.
Conjugation:	Unconjugated
Storage:	Store the antibody (in aliquots) at -20°C. Avoid repeated freezing and thawing.
Stability:	Shelf life: One year from despatch.
Gene Name:	v-myc avian myelocytomatosis viral oncogene homolog
Database Link:	Entrez Gene 4609 Human P01106
Synonyms:	Transcription factor p64, BHLHE39



[View online »](#)

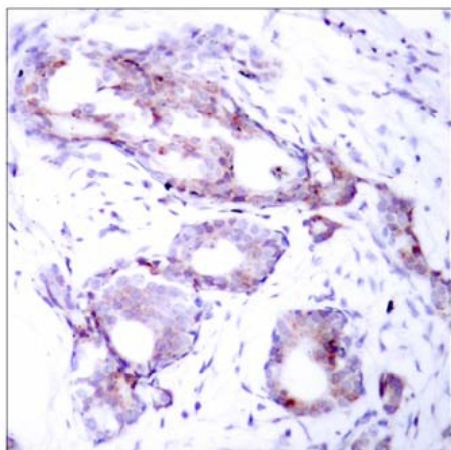
Product images:

Figure 1. Immunohistochemical analysis of paraffin- embedded human breast carcinoma tissue, using Myc (phospho-Ser373) antibody.