

Product datasheet for **AP02328PU-N**

JUNB pSer259 Rabbit Polyclonal Antibody

Product data:

Product Type:	Primary Antibodies
Applications:	IHC, WB
Recommended Dilution:	Suitable for use in Western blot (1:500~1:1000) and Immunohistochemistry (1:50~1:100).
Reactivity:	Human
Host:	Rabbit
Clonality:	Polyclonal
Immunogen:	The antiserum was produced against synthesized phosphopeptide derived from human JunB around the phosphorylation site of serine 259 (P-V-SP-P-I).
Specificity:	The antibody was affinity-purified from rabbit antiserum by affinity-chromatography using epitope-specific phosphopeptide. The antibody against non-phosphopeptide was removed by chromatography using non-phosphopeptide corresponding to the phosphorylation site. JunB (phospho-Ser259) antibody detects endogenous levels of JunB only when phosphorylated at serine 259.
Formulation:	Phosphate buffered saline (without Mg ²⁺ and Ca ²⁺), pH 7.4, 150 mM NaCl, 0.02% Sodium Azide and 50% glycerol. State: Aff - Purified State: Liquid purified Ig fraction.
Concentration:	lot specific
Purification:	Immunoaffinity chromatography.
Conjugation:	Unconjugated
Storage:	Store the antibody (in aliquots) at -20°C. Avoid repeated freezing and thawing.
Stability:	Shelf life: One year from despatch.
Gene Name:	JunB proto-oncogene, AP-1 transcription factor subunit
Database Link:	Entrez Gene 3726 Human P17275



[View online »](#)

Background:

The cJun proto-oncogene was first identified as the cellular homolog of the avian sarcoma virus vjun oncogene. JunB and JunD have been shown to be almost identical to cJun in their C terminal regions, which are involved in dimerization and DNA binding, whereas their N terminal domains, which are involved in transcriptional activation, diverge. JunB is a transcription factor involved in regulating gene activity following the primary growth factor response. It binds to the DNA sequence 5'-TGA[CG]TCA-3'.

Synonyms:

JUNB

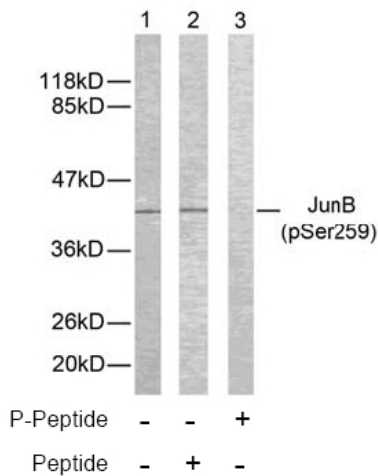
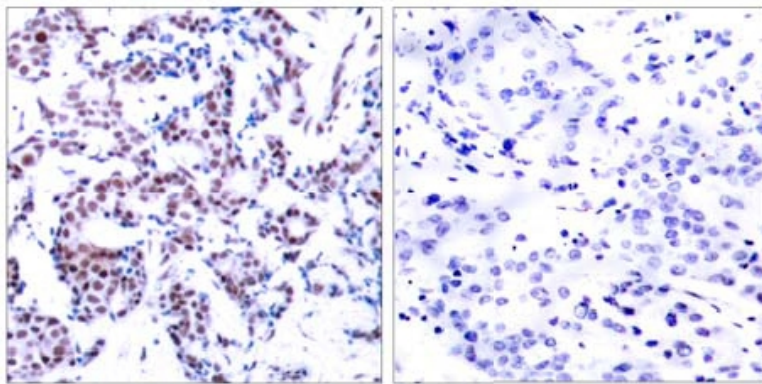
Product images:


Figure 2. Western blot analysis of extracts from HeLa cells using JunB (phospho-Ser259) antibody.



P-Peptide - +

Figure 1. Immunohistochemical analysis of paraffin-embedded human breast carcinoma using JunB (phospho-Ser259) antibody.