

## Product datasheet for **AP02327PU-N**

### JUNB pSer79 Rabbit Polyclonal Antibody

#### Product data:

Product Type:	Primary Antibodies
Applications:	IF, IHC
Recommended Dilution:	<b>Immunofluorescence:</b> 1/100-1/200. <b>Immunohistochemistry on Paraffin Sections:</b> 1/50-1/100.
Reactivity:	Human, Mouse, Rat
Host:	Rabbit
Clonality:	Polyclonal
Immunogen:	Synthetic phosphopeptide derived from Human JunB around the phosphorylation site of Serine 79 (G-A-SP-L-K).
Specificity:	This antibody detects endogenous levels of JunB only when phosphorylated at Serine 79.
Formulation:	Phosphate buffered saline (without Mg <sup>2+</sup> and Ca <sup>2+</sup> ), pH 7.4, 150 mM NaCl State: Aff - Purified State: Liquid purified Ig fraction Preservative: 0.02% Sodium Azide
Concentration:	lot specific
Purification:	Immunoaffinity chromatography
Conjugation:	Unconjugated
Storage:	Upon receipt, store undiluted (in aliquots) at -20°C. Avoid repeated freezing and thawing.
Stability:	Shelf life: one year from despatch.
Predicted Protein Size:	43 kDa
Gene Name:	JunB proto-oncogene, AP-1 transcription factor subunit
Database Link:	<a href="#">Entrez Gene 3726 Human P17275</a>



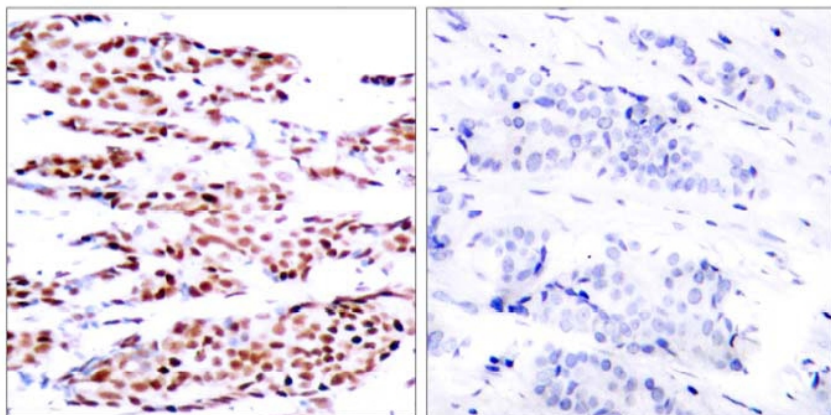
[View online »](#)

**Background:**

The cJun proto-oncogene was first identified as the cellular homolog of the avian sarcoma virus vjun oncogene. JunB and JunD have been shown to be almost identical to cJun in their C terminal regions, which are involved in dimerization and DNA binding, whereas their N terminal domains, which are involved in transcriptional activation, diverge. JunB is a transcription factor involved in regulating gene activity following the primary growth factor response. It binds to the DNA sequence 5'-TGA[CG]TCA-3'.

**Synonyms:**

JUNB

**Product images:**

P-Peptide

-

+

Figure 1. Immunohistochemical analysis of paraffin-embedded human breast carcinoma tissue using JunB (phospho-Ser79) antibody.

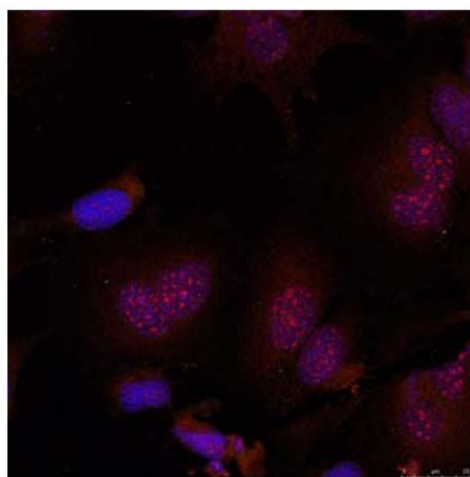


Figure 2. Immunofluorescence staining of methanol-fixed HeLa cells using JunB (pSer79) Antibody