

## Product datasheet for **AP02325PU-S**

### c-Jun (JUN) pThr239 Rabbit Polyclonal Antibody

#### Product data:

Product Type:	Primary Antibodies
Applications:	IF, IHC, WB
Recommended Dilution:	<b>Western blot:</b> 1/500 - 1/1000; Incubate membrane with diluted antibody in 5% nonfat milk, 1X TBS, 0,1% Tween-20 at 4°C with gentle shaking, overnight. <b>Immunohistochemistry on paraffin sections:</b> 1/50 - 1/100. <b>Immunofluorescence:</b> 1/100 - 1/200.
Reactivity:	Human, Mouse
Host:	Rabbit
Clonality:	Polyclonal
Immunogen:	Synthetic phosphopeptide derived from human c-Jun around the phosphorylation site of threonine 239 (G-E-TP-P-P).
Specificity:	c-Jun (phospho-Thr239) antibody detects endogenous levels of c-Jun only when phosphorylated at threonine 239.
Formulation:	Phosphate buffered saline (without Mg <sup>2+</sup> and Ca <sup>2+</sup> ), pH 7.4, 150 mM NaCl containing 0.02% Sodium Azide as preservative and 50% glycerol as stabilizer State: Aff - Purified State: Liquid purified Ig fraction
Concentration:	lot specific
Purification:	Immunoaffinity chromatography
Conjugation:	Unconjugated
Storage:	Store the antibody (in aliquots) at -20°C. Avoid repeated freezing and thawing.
Stability:	Shelf life: One year from despatch.
Gene Name:	Jun proto-oncogene, AP-1 transcription factor subunit
Database Link:	<a href="#">Entrez Gene 3725 Human P05412</a>



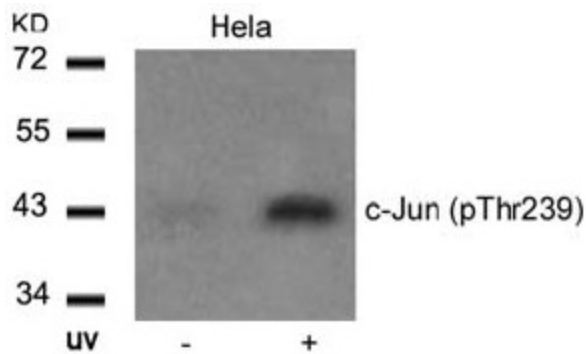
[View online »](#)

**Background:**

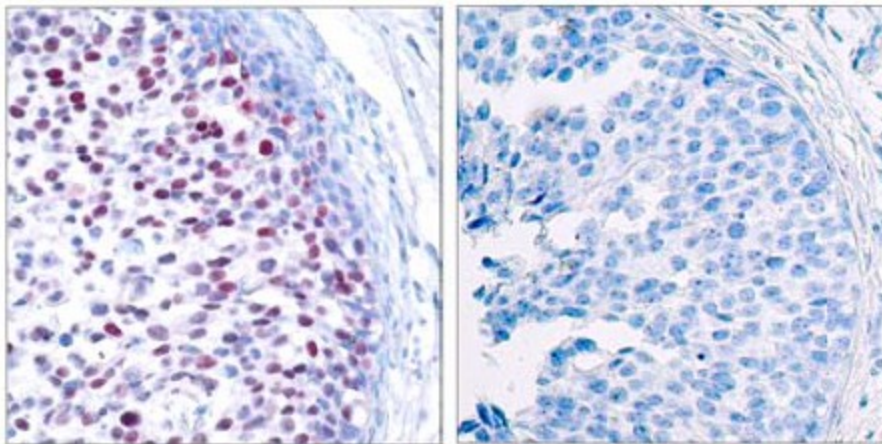
The human protooncogene JUN is the putative transforming gene of avian sarcoma virus 17, and it encodes a protein which is highly homologous to the viral protein. cJun (previously known as the Fos binding protein p39) and c Fos form a complex in the nucleus. AP 1 (activating protein 1) is a collective term referring to these dimeric transcription factors composed of Jun, Fos or ATF subunits that bind to a common DNA site, the AP1 binding site. AP 1 proteins, mostly the Jun group, regulate the expression and function of cell cycle regulators such as Cyclin D1, p53, p21 (cip1/waf1), p19 (ARF) and p16. Fos and Jun proto oncogene expression is induced transiently by a variety of extracellular stimuli associated with mitogenesis, differentiation processes or depolarization of neurons. JUN has been mapped to 1p32 to p31, a chromosomal region involved in both translocations and deletions in human malignancies.

**Synonyms:**

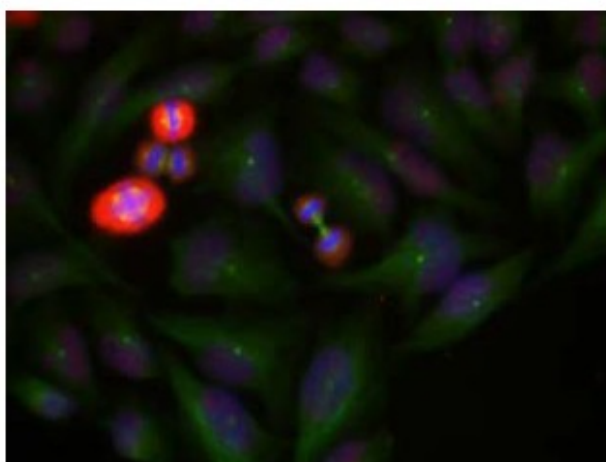
Transcription factor AP1

**Product images:**


Western Blot analysis of extracts from HeLa cells untreated or treated with UV using c-Jun (pThr239) Antibody



Immunohistochemical analysis of paraffin-embedded human breast carcinoma tissue using c-Jun (pThr239) Antibody (left) or the same antibody preincubated with blocking peptide (right)



Immunofluorescence staining of methanol-fixed HeLa cells using c-Jun (pThr239) Antibody