

## Product datasheet for **AP02308PU-S**

### RAF1 pSer259 Rabbit Polyclonal Antibody

#### Product data:

Product Type:	Primary Antibodies
Applications:	IHC, WB
Recommended Dilution:	Western blot (1:500-1:1000). Immunohistochemistry (1:50-1:100).
Reactivity:	Human, Mouse
Host:	Rabbit
Clonality:	Polyclonal
Immunogen:	The antiserum was produced against synthesized phosphopeptide derived from human Raf-1 around the phosphorylation site of serine 259 (S-T-Sp-T-P).
Specificity:	The antibody was affinity-purified from rabbit antiserum by affinity-chromatography using epitope-specific phosphopeptide. The antibody against non-phosphopeptide was removed by chromatography using non-phosphopeptide corresponding to the phosphorylation site. Raf-1 (phospho-Ser259) antibody detects endogenous levels of Raf-1 only when phosphorylated at serine 259.
Formulation:	Phosphate buffered saline (without Mg <sup>2+</sup> and Ca <sup>2+</sup> ), pH 7.4, 150 mM NaCl, 0.02% Sodium Azide and 50% glycerol. State: Aff - Purified State: Liquid purified IgG fraction
Concentration:	lot specific
Purification:	Affinity-chromatography using epitope-specific phosphopeptide. The antibody against non-phosphopeptide was removed by chromatography using non-phosphopeptide corresponding to the phosphorylation site.
Conjugation:	Unconjugated
Storage:	Store the antibody (in aliquots) at -20°C. Avoid repeated freezing and thawing.
Stability:	Shelf life: One year from despatch.
Gene Name:	Raf-1 proto-oncogene, serine/threonine kinase
Database Link:	<a href="#">Entrez Gene 5894 Human P04049</a>



[View online »](#)

Synonyms: C-RAF, Raf-1, cRaf

**Product images:**

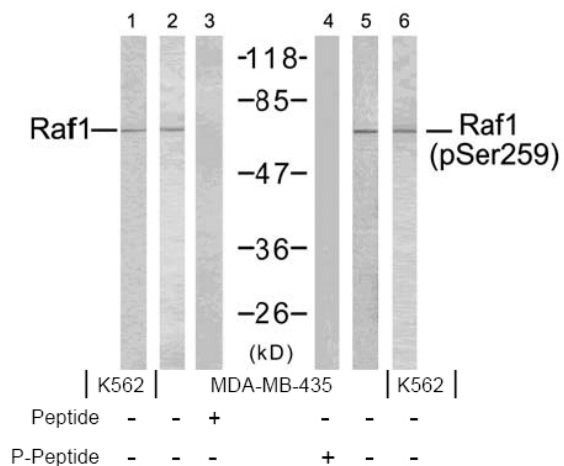


Figure 2. Western blot analysis using Raf-1 antibody (Line 1, 2, and 3) and Raf-1 (phospho-Ser259) antibody (Line 4, 5, and 6).

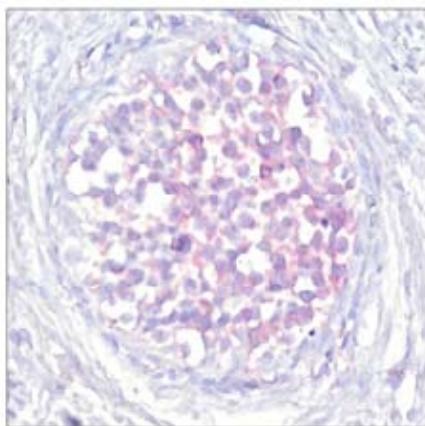


Figure 1. Immunohistochemical analysis of paraffin-embedded human breast carcinoma tissue using Raf-1 (phospho-Ser259) antibody