

## Product datasheet for **AP02307PU-S**

### **PDPK1 pSer241 Rabbit Polyclonal Antibody**

#### **Product data:**

Product Type:	Primary Antibodies
Applications:	IF, IHC, WB
Recommended Dilution:	<b>Western blot:</b> 1/500-1/1000. <b>Immunofluorescence:</b> 1/100-1/200. <b>Immunohistochemistry:</b> 1/50-1/100.
Reactivity:	Human, Mouse, Rat
Host:	Rabbit
Clonality:	Polyclonal
Immunogen:	The antiserum was produced against synthesized phosphopeptide derived from human PDK1 around the phosphorylation site of serine 241 (A-N-S(p)-F-V).
Specificity:	The antibody was affinity-purified from rabbit antiserum by affinity-chromatography using epitope-specific phosphopeptide. The antibody against non-phosphopeptide was removed by chromatography using non-phosphopeptide corresponding to the phosphorylation site. PDK1 (phospho-Ser241) antibody detects endogenous levels of PDK1 only when phosphorylated at serine 241.
Formulation:	Phosphate buffered saline (without Mg <sup>2+</sup> and Ca <sup>2+</sup> ), pH 7.4, 150 mM NaCl, 0.02% Sodium Azide and 50% glycerol. State: Aff - Purified State: Liquid purified Ig fraction.
Concentration:	lot specific
Purification:	Immunoaffinity chromatography.
Conjugation:	Unconjugated
Storage:	Upon receipt, store undiluted (in aliquots) at -20°C. Avoid repeated freezing and thawing.
Stability:	Shelf life: one year from despatch.
Gene Name:	3-phosphoinositide dependent protein kinase 1
Database Link:	<a href="#">Entrez Gene 5170 Human O15530</a>



[View online »](#)

Synonyms: PDK-1, PDK1, 3-phosphoinositide-dependent proteinkinase 1, hPDK1, PDPK1

**Product images:**

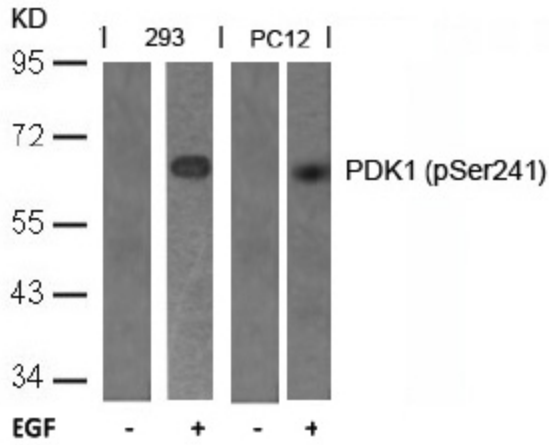
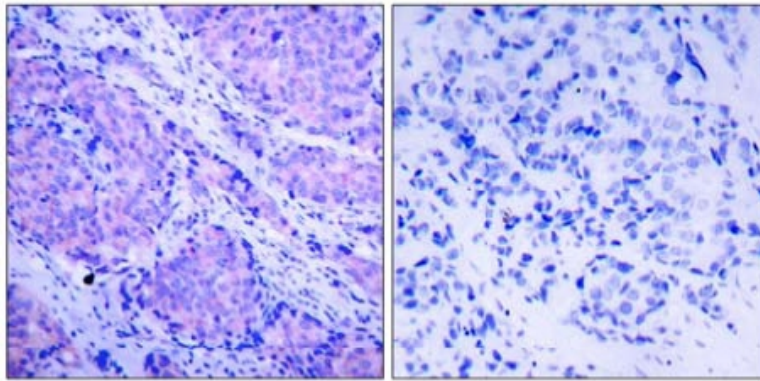


Figure 2. Western blot analysis of extracts from 293 and PC12 cells untreated or treated with EGF using PDK1 antibody (phospho-Ser241)



P-Peptide - +

Figure 1. Immunohistochemical analysis of paraffin- embedded human breast carcinoma tissue using PDK1 antibody (Phospho-Ser241)

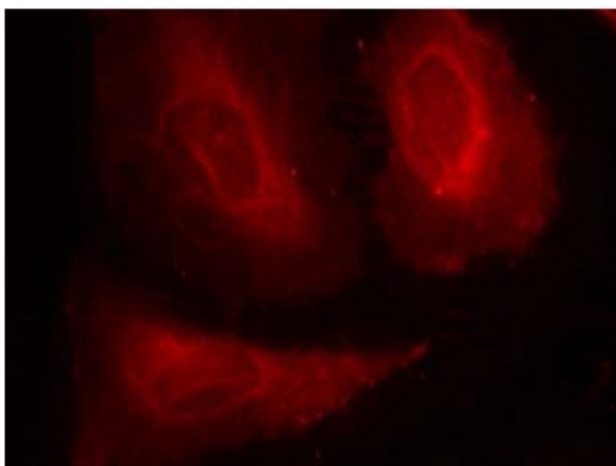


Figure 3. Immunofluorescence staining of methanol-fixed HeLa cells using PDK1 antibody (Phospho-Ser241)