

Product datasheet for **AP02304PU-N**

GSK3 beta (GSK3B) pSer9 Rabbit Polyclonal Antibody

Product data:

Product Type:	Primary Antibodies
Applications:	IF, IHC, WB
Recommended Dilution:	Western blot: 1/500-1/1000. Note: Incubate membrane with diluted antibody in 5% nonfat milk, 1xTBS, 0.1% Tween-20 at 4°C with gentle shaking, overnight. Immunofluorescence: 1/100-1/200. Immunohistochemistry on Paraffin-Embedded Sections: 1/50-1/100.
Reactivity:	Human, Mouse
Host:	Rabbit
Clonality:	Polyclonal
Immunogen:	Peptide Sequence around the phosphorylation site of Serine 9 (T-T- S -F-A) derived from Human GSK3B.
Specificity:	This antibody detects endogenous levels of GSK3 β only when phosphorylated at Serine 9.
Formulation:	PBS (without Mg ²⁺ and Ca ²⁺), pH 7.4, 150 mM NaCl, 0.02% Sodium Azide and 50% Glycerol. State: Aff - Purified State: Liquid purified IgG fraction.
Concentration:	lot specific
Purification:	Affinity-Chromatography using epitope-specific phosphopeptide. Non-phospho specific antibody was removed by chromatography using non-phosphopeptide.
Conjugation:	Unconjugated
Storage:	Store the antibody (in aliquots) at -20°C. Avoid repeated freezing and thawing.
Stability:	Shelf life: One year from despatch.
Gene Name:	glycogen synthase kinase 3 beta
Database Link:	Entrez Gene 2932 Human P49841



[View online »](#)

Background:

Glycogen synthase kinase 3 (GSK3) is a proline directed serine threonine kinase that was initially identified as a phosphorylating and inactivating glycogen synthase. GSK3 has been implicated in fundamental cell processes such as cell fate determination, metabolism, transcriptional control and oncogenesis. Two isoforms, alpha (GSK3A; OMIM 606784) and beta, show a high degree of amino acid homology within their catalytic domains. GSK3B is involved in energy metabolism, neuronal cell development and body pattern formation.

Synonyms:

GSK-3 beta, Glycogen synthase kinase-3 beta, GSK3B

Note:

Molecular Weight: 46 kDa

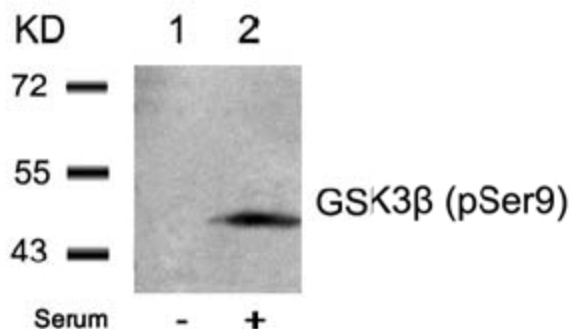
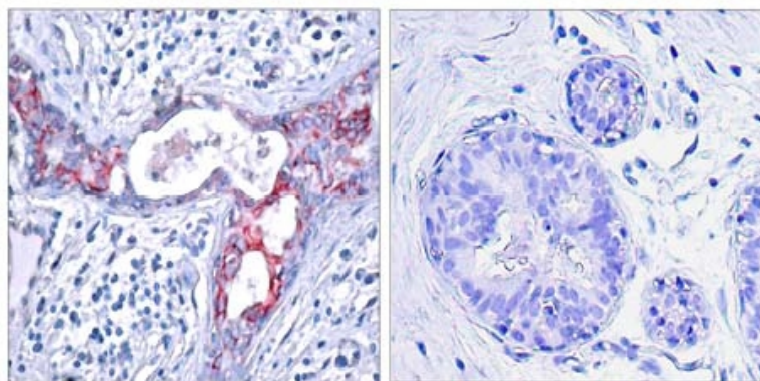
Product images:


Figure 3. Western blot analysis of extracts from 293 cells untreated (Lane 1) or treated with Serum (Lane 2) using GSK3B antibody.



P-Peptide - +

Figure 1. Immunohistochemical analysis of paraffin-embedded human breast carcinoma tissue using GSK3B antibody.



Figure 2. Immunofluorescence staining of methanol-fixed HeLa cells showing cytoplasmic staining using GSK3B antibody