

## Product datasheet for **AP02296SU-N**

### Selenoprotein M (SELM) Rabbit Polyclonal Antibody

#### Product data:

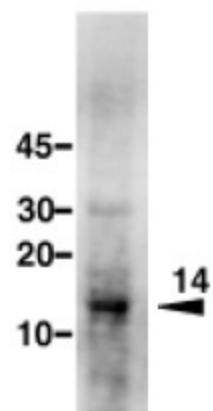
Product Type:	Primary Antibodies
Applications:	ELISA, IHC, WB
Recommended Dilution:	ELISA (1:15000). Western blot (1:2.000). Immunohistochemistry (1:200).
Host:	Rabbit
Clonality:	Polyclonal
Immunogen:	Recombinant selenoprotein M from Suberites domuncula
Specificity:	This antibody detects Selenoprotein M.
Formulation:	State: Serum State: Lyophilized serum
Reconstitution Method:	Restore in aqua bidest to initial volume.
Conjugation:	Unconjugated
Storage:	Store lyophilized at 2 - 8 °C and reconstituted at -20 °C. Avoid repeated freezing and thawing.
Stability:	Shelf life: One year from despatch.
Database Link:	<a href="#">Q4A3I8</a>
Synonyms:	SEPM



[View online »](#)

**Product images:**

Western blot:



Extracts from sodium selenite-treated primmorphs were separated by size and transferred to membranes. The blots were incubated with antibody AP02296SU.