

Product datasheet for **AP02294SU-N**

Silicatein alpha Rabbit Polyclonal Antibody

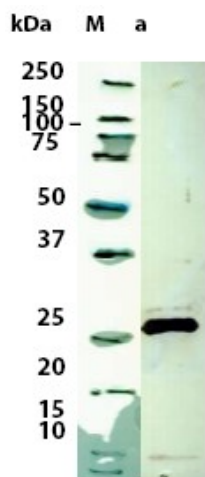
Product data:

Product Type:	Primary Antibodies
Applications:	ELISA, IHC, WB
Recommended Dilution:	ELISA (1:7.000). Western blot (1:1.000). Immunohistochemistry (1:100).
Host:	Rabbit
Clonality:	Polyclonal
Immunogen:	Recombinant silicatein α from <i>Suberites domuncula</i> .
Specificity:	This antibody detects Silicatein- α and Silicatein- β against the following species: <i>Suberites domuncula</i> , <i>Lubomirskia baikalensis</i> , <i>Tethya aurantium</i> , <i>Geodia cydonium</i> .
Formulation:	State: Lyophilized serum, 137 mM D-(-)-mannitol
Reconstitution Method:	Restore in 100 μ l aqua bidest
Conjugation:	Unconjugated
Storage:	Store lyophilized at 2 - 8 °C and reconstituted at -20 °C. Avoid repeated freezing and thawing.
Stability:	Shelf life: One year from despatch.
Database Link:	Q2MEV3



[View online »](#)

Product images:



a: Western blot reacted with antibody. M: Molecular mass marker proteins