

## Product datasheet for **AP02293SU-S**

### EGF Rabbit Polyclonal Antibody

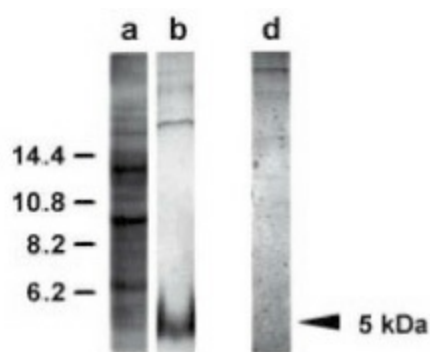
#### Product data:

Product Type:	Primary Antibodies
Applications:	ELISA, IHC, WB
Recommended Dilution:	<b>ELISA:</b> 1/50000. <b>Western blot:</b> 1/500 (Ref.1). <b>Immunohistochemistry:</b> 1/50.
Host:	Rabbit
Clonality:	Polyclonal
Immunogen:	Recombinant EGF precursor from <i>Suberites domuncula</i> .
Specificity:	This antibody detects EGF precursor domain number 1, 2 and 3.
Formulation:	State: Serum State: Lyophilized serum
Reconstitution Method:	Restore in aqua bidest to initial volume.
Conjugation:	Unconjugated
Storage:	Store lyophilized at 2-8°C for 6 months or at -20°C long term. After reconstitution store the antibody undiluted at 2-8°C for one month or (in aliquots) at -20°C long term. Avoid repeated freezing and thawing.
Stability:	Shelf life: one year from despatch.
Gene Name:	epidermal growth factor
Database Link:	<a href="#">Entrez Gene 1950 Human P01133</a>
Synonyms:	beta-urogastrone; HOMG4; URG
Protein Families:	Adult stem cells, Druggable Genome, Embryonic stem cells, ES Cell Differentiation/IPS, Induced pluripotent stem cells, Transmembrane
Protein Pathways:	Bladder cancer, Cytokine-cytokine receptor interaction, Endocytosis, Endometrial cancer, ErbB signaling pathway, Focal adhesion, Gap junction, Glioma, MAPK signaling pathway, Melanoma, Non-small cell lung cancer, Pancreatic cancer, Pathways in cancer, Prostate cancer, Regulation of actin cytoskeleton



[View online »](#)

## Product images:



Western Blot analysis of AP02293SU specificity: Crude extract from *S. domuncula* tissue was separated by SDS-PAGE and immunoblotted with AP02293SU (1/500). Lane a: Crude extract stained with Coomassie Brilliant Blue. Lane b: AP02293SU detects a 5 kDa band which corresponds to a processed form of EGF from the 78 kDa precursor. Lane d: AP02293SU preabsorbed with recombinant EGF precursor. Perovic-Ottstadt S et al. Eur J Biochem. 271:1924-1937.