

Product datasheet for **AP02284SU-S**

Comp Chicken Polyclonal Antibody

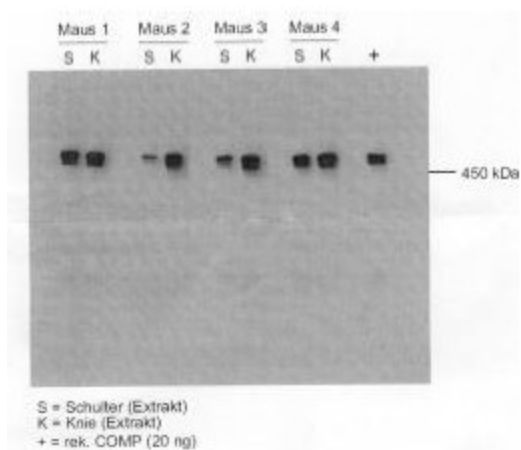
Product data:

Product Type:	Primary Antibodies
Applications:	WB
Recommended Dilution:	Western blot.
Reactivity:	Rat
Host:	Chicken
Clonality:	Polyclonal
Immunogen:	Recombinant rat COMP (Fragment T3+TC)
Specificity:	This antibody detects COMP.
Formulation:	State: Serum State: Lyophilized serum
Reconstitution Method:	Restore in aqua bidest.
Conjugation:	Unconjugated
Storage:	Store lyophilized at 2 - 8 °C and reconstituted at -20 °C. Avoid repeated freezing and thawing.
Stability:	Shelf life: One year from despatch.
Gene Name:	cartilage oligomeric matrix protein
Database Link:	Entrez Gene 25304 Rat P35444
Background:	COMP is a noncollagenous extracellular matrix (ECM) protein. It consists of five identical glycoprotein subunits, each with EGF like and calcium binding (thrombospondin like) domains. Oligomerization results from formation of a five stranded coiled coil and disulfides. Binding to other ECM proteins such as collagen appears to depend on divalent cations. Mutations can cause the osteochondrodysplasias pseudoachondroplasia (PSACH) and multiple epiphyseal dysplasia (MED).
Synonyms:	Cartilage oligomeric matrix protein
Note:	LocusID 25304



[View online »](#)

Product images:



Detection limit for recombinant GST tagged COMMD7 is approximately 0.1 ng/ml as a capture antibody.