

Product datasheet for **AP02275SU-N**

Nidogen-2 Rabbit Polyclonal Antibody

Product data:

Product Type:	Primary Antibodies
Applications:	ELISA, IHC, R, WB
Recommended Dilution:	RIA (See Schymeinsky, 2002). ELISA: 1/5000-1/16000 (See Kohfeldt, 1998, and Salmivirta, 2002). Western blot: 1/400-1/1000 (See Schymeinsky, 2002, and Kunze, 2010) Immunohistochemistry on Paraffin Sections: 1/1000. Immunohistochemistry on Cryosections: 1/1000. <i>For References on IHC See: Kohfeldt, 1998, Salmivirta, 2002, Schymeinsky, 2002, and Kunze, 2010.</i>
Reactivity:	Mouse
Host:	Rabbit
Clonality:	Polyclonal
Immunogen:	Recombinant Mouse Nidogen 2
Specificity:	This antibody detects Mouse Nidogen-2. Other species not tested.
Formulation:	State: Serum State: Lyophilized Serum
Reconstitution Method:	Restore in aqua bidest to initial volume.
Conjugation:	Unconjugated
Storage:	Store lyophilized at 2-8°C for 6 months or at -20°C long term. After reconstitution store the antibody undiluted at 2-8°C for one month or (in aliquots) at -20°C long term. Avoid repeated freezing and thawing.
Stability:	Shelf life: one year from despatch.
Gene Name:	nidogen 2
Database Link:	Entrez Gene 18074 Mouse O88322
Background:	Nidogen 2 is an adhesion glycoprotein which is widely distributed in basement membranes. Binds to collagens I and IV, to perlecan and to laminin 1. Does not bind fibulins. It probably has a role in cell extracellular matrix interactions.

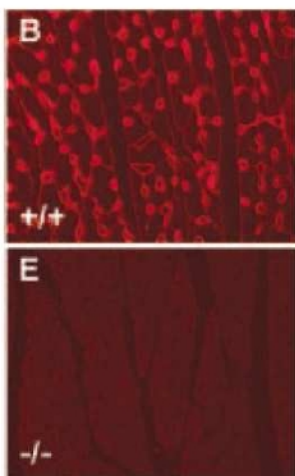


[View online »](#)

Synonyms: NID-2,NID2

Note: Locus ID: 18074

Product images:



Immunofluorescence of Nidogen 2 staining in Paraffin sections of cardiac muscle tissue from control (+/+) and Nidogen 2-mutant (-/-) mice. Image B: In control sections, staining for Nidogen 2 was prominent around capillaries, but not around cardiomyocytes.