

## Product datasheet for **AP02274SU-S**

### Nid1 Rabbit Polyclonal Antibody

#### Product data:

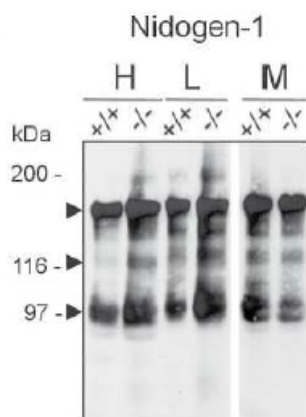
|                        |   |
|------------------------|---|
| Product Type:          | Primary Antibodies  |
| Applications:          | ELISA, IF, IHC, R, WB   |
| Recommended Dilution:  | <b>RIA</b> (Ref.1).<br><b>ELISA</b> (Ref.2).<br><b>Western blot:</b> 1/1000 (Ref.1,3,4).<br><b>Immunofluorescence.</b><br><b>Immunohistochemistry on Frozen Sections</b> (Ref.2,3).   |
| Reactivity:            | Mouse   |
| Host:                  | Rabbit  |
| Clonality:             | Polyclonal  |
| Immunogen:             | Recombinant Mouse Nidogen 1   |
| Specificity:           | This antibody detects Mouse Nidogen 1. Other species not tested.  |
| Formulation:           | State: Serum<br>State: Lyophilized Serum  |
| Reconstitution Method: | Restore in aqua bidest to initial volume.   |
| Conjugation:           | Unconjugated  |
| Storage:               | Store lyophilized at 2-8°C for 6 months or at -20°C long term.<br>After reconstitution store the antibody undiluted at 2-8°C for one month or (in aliquots) at -20°C long term.<br>Avoid repeated freezing and thawing.                     |
| Stability:             | Shelf life: one year from despatch.   |
| Gene Name:             | nidogen 1   |
| Database Link:         | <a href="#">Entrez Gene 18073 Mouse P10493</a>  |
| Background:            | Nidogen 1 / Entactin is a sulfated glycoprotein which is widely distributed in basement membranes and that is tightly associated with laminin. Also binds to collagen IV. It probably has a role in cell extracellular matrix interactions. |
| Synonyms:              | NID1, NID, Entactin   |



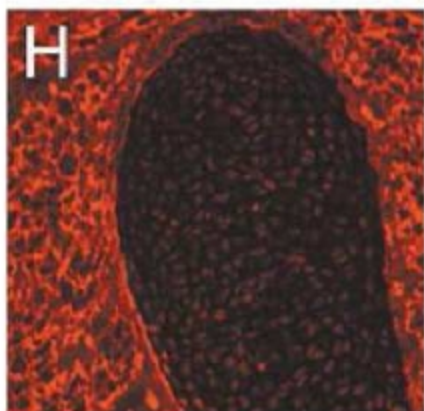
[View online »](#)

Note: LocusID 18073

## Product images:



Western Blot analysis of Nidogen 1 antibody Cat.-No AP02274SU specificity. Protein extracts of Heart lung and Skeletal muscle from normal (+/+) and Nidogen 2-mutant (-/-) mice were separated by SDS-PAGE and immunoblotted with AP02274SU (1/1000). This antibody detects several Nidogen 1 specific bands (arrow heads) in normal and Nidogen 2 deficient mice Heart (H), Lung (L), Muscle (M). Schymeinsky J et al. (2002) Mol Cell Biol 22 (19): 6820-6830.



Immunofluorescence staining in Cryosection of Mouse cartilage and surrounding tissue using Nidogen 1 antibody Cat.-No AP02274SU. Schymeinsky J et al. (2002) Mol Cell Biol 22 (19): 6820-6830.