

Product datasheet for **AP02274SU-N**

Nid1 Rabbit Polyclonal Antibody

Product data:

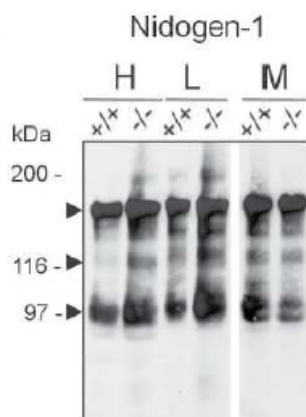
Product Type:	Primary Antibodies
Applications:	ELISA, IF, IHC, R, WB
Recommended Dilution:	RIA (Ref.1). ELISA (Ref.2). Western blot: 1/1000 (Ref.1,3,4). Immunofluorescence. Immunohistochemistry on Frozen Sections (Ref.2,3).
Reactivity:	Mouse
Host:	Rabbit
Clonality:	Polyclonal
Immunogen:	Recombinant Mouse Nidogen 1
Specificity:	This antibody detects Mouse Nidogen 1. Other species not tested.
Formulation:	State: Serum State: Lyophilized Serum
Reconstitution Method:	Restore in aqua bidest to initial volume.
Conjugation:	Unconjugated
Storage:	Store lyophilized at 2-8°C for 6 months or at -20°C long term. After reconstitution store the antibody undiluted at 2-8°C for one month or (in aliquots) at -20°C long term. Avoid repeated freezing and thawing.
Stability:	Shelf life: one year from despatch.
Gene Name:	nidogen 1
Database Link:	Entrez Gene 18073 Mouse P10493
Background:	Nidogen 1 / Entactin is a sulfated glycoprotein which is widely distributed in basement membranes and that is tightly associated with laminin. Also binds to collagen IV. It probably has a role in cell extracellular matrix interactions.
Synonyms:	NID1, NID, Entactin



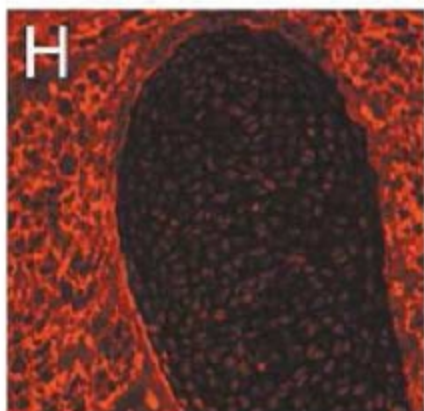
[View online »](#)

Note: LocusID 18073

Product images:



Western Blot analysis of Nidogen 1 antibody Cat.-No AP02274SU specificity. Protein extracts of Heart lung and Skeletal muscle from normal (+/+) and Nidogen 2-mutant (-/-) mice were separated by SDS-PAGE and immunoblotted with AP02274SU (1/1000). This antibody detects several Nidogen 1 specific bands (arrow heads) in normal and Nidogen 2 deficient mice Heart (H), Lung (L), Muscle (M). Schymeinsky J et al. (2002) Mol Cell Biol 22 (19): 6820-6830.



Immunofluorescence staining in Cryosection of Mouse cartilage and surrounding tissue using Nidogen 1 antibody Cat.-No AP02274SU. Schymeinsky J et al. (2002) Mol Cell Biol 22 (19): 6820-6830.