

Product datasheet for **AP02273SU-N**

Laminin gamma 1 (LAMC1) Rabbit Polyclonal Antibody

Product data:

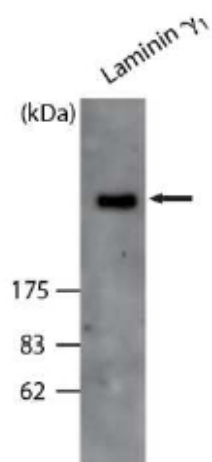
Product Type:	Primary Antibodies
Applications:	IHC, WB
Recommended Dilution:	Western Blot: 1/1000 (Ref.1). Immunohistochemistry on Frozen and Paraffin Sections (Ref.1,2).
Reactivity:	Mouse
Host:	Rabbit
Clonality:	Polyclonal
Immunogen:	Mouse Laminin gamma 1 chain
Specificity:	This antibody detects Laminin gamma-1 chain.
Formulation:	State: Serum State: Lyophilized Serum
Reconstitution Method:	Restore in aqua bidest to initial volume.
Conjugation:	Unconjugated
Storage:	Store lyophilized at 2-8°C for 6 months or at -20°C long term. After reconstitution store the antibody undiluted at 2-8°C for one month or (in aliquots) at -20°C long term. Avoid repeated freezing and thawing.
Stability:	Shelf life: one year from despatch.
Gene Name:	laminin subunit gamma 1
Database Link:	P11047
Background:	Laminin, a major structural glycoprotein of the basement membranes, is an attachment and survival factor for epithelial cells and can also promote the growth of epithelial cells. Laminin plays an important role in both the structural organization of basement membranes and in the anchorage of cells. Laminin is a heterotrimeric extracellular matrix protein consisting of 3 chains: alpha (LAMA1), beta (LAMB1), and gamma (LAMC1), formerly A, B1, and B2, respectively. Several isoforms of each chain have been identified. Laminin gamma 1 is the most ubiquitously expressed laminin subunit.
Synonyms:	LAMC1, LAMB2, Laminin subunit gamma-1, Laminin B2 chain



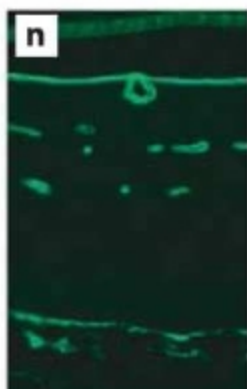
[View online »](#)

Note: LocusID 18073

Product images:



Western Blot analysis of Laminin gamma-1 antibody Cat.-No AP02273SU. Extract of a single retina of a 1-month-old C57BL/6 wild-type Mouse was separated by SDS-PAGE under non-reducing conditions and immunoblotted with AP02273SU (1/1000). This antibody specifically binds Laminin gamma-1 (arrow). Kunze A et al. (2010) *Ophthalmic Res* 43 (2): 108-112.



Immunohistochemistry of Laminin gamma-1 Cat.-No AP02273SU staining in Paraffin section of a 18-month-old Mouse retina. Antigen retrieval was performed in 0.005% Trypsin at 37°C for 10min. The section was incubated with AP02273SU overnight followed by incubation with Alexa488 anti Rabbit antibody (1/1000). This antibody stains Bruch's membrane, the capillary basement membranes and the inner limiting membrane. Kunze A et al. (2010) *Ophthalmic Res* 43 (2): 108-112.