

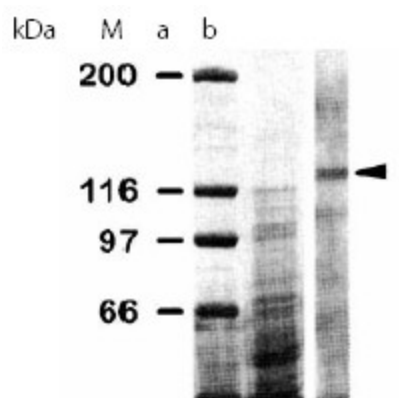
Product datasheet for **AP02268SU-S**

Integrin (Geodia cydonium) Rabbit Polyclonal Antibody

Product data:

Product Type:	Primary Antibodies
Applications:	ELISA, IHC, IP, WB
Recommended Dilution:	ELISA (1:40.000). Western blot (1:4.000). Immunoprecipitation. Immunohistochemistry (1:400).
Host:	Rabbit
Clonality:	Polyclonal
Immunogen:	Integrin from Geodia cydonium
Specificity:	This antibody detects Integrin.
Formulation:	State: Serum State: Lyophilized serum
Reconstitution Method:	Restore in aqua bidest to initial volume.
Conjugation:	Unconjugated
Storage:	Store lyophilized at 2 – 8 °C and reconstituted at –20 °C. Avoid repeated freezing and thawing.
Stability:	Shelf life: One year from despatch.



Product images:

a: SDS-Page of protein extract of Suberites domuncula. b: Size separated Proteins were transferred to membranes and reacted with antibody 173. The arrow head points to the band, representing -integrin. M: Molecular mass marker proteins