

Product datasheet for **AP02266SU-N**

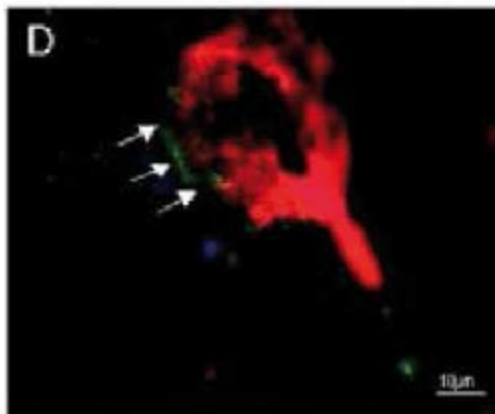
Zonulin (GGVLVQPG) Rabbit Polyclonal Antibody

Product data:

Product Type:	Primary Antibodies
Applications:	ELISA, IHC
Recommended Dilution:	ELISA: 1/1000. Immunohistochemistry on Cryo Sections (Ref.1,2). Immunohistochemistry on Paraffin Sections: 1/300.
Reactivity:	Human
Host:	Rabbit
Clonality:	Polyclonal
Immunogen:	Synthetic Zonulin peptide (GGVLVQPG) KLH-conjugated.
Specificity:	This antibody detects Human Zonulin. Other species not tested.
Formulation:	State: Serum State: Lyophilized Serum
Reconstitution Method:	Restore in aqua bidest to initial volume.
Conjugation:	Unconjugated
Storage:	Store lyophilized at 2-8°C for 6 months or at -20°C long term. After reconstitution store the antibody undiluted at 2-8°C for one month or (in aliquots) at -20°C long term. Avoid repeated freezing and thawing.
Stability:	Shelf life: one year from despatch.
Background:	Zonulin is a protein that participates in tight junctions between cells of the wall of the digestive tract. Initially discovered in 2000 as the target of zonula occludens toxin, secreted by cholera pathogen <i>Vibrio cholerae</i> , it has been implicated in the pathogenesis of coeliac disease and diabetes mellitus type 1. It is being studied as a target for vaccine adjuvants. ALBA Therapeutics is developing a zonulin receptor antagonist, AT-1001, that is currently in phase 2 clinical trials.



[View online »](#)

Product images:

Immunofluorescence staining of Zonulin in Cryosection of astrocytoma WHO III. Zonulin antibody Cat.-No AP02266SU marks the beginning degradation of the blood-brain barrier with Zonulin (green) localized at the blood vessels (GSI agglutinin, red). Skardelly