

## Product datasheet for **AP02251PU-N**

### Collagen XVII (COL17A1) (507-548) Rabbit Polyclonal Antibody

#### Product data:

Product Type:	Primary Antibodies
Applications:	ELISA, IF, IHC, WB
Recommended Dilution:	<b>ELISA:</b> 1/5000. <b>Western blot:</b> 1/500 (Ref.2) <b>Immunocytochemistry (Ref.3).</b> <b>Immunocytochemistry on Frozen Sections:</b> 1/100 (Ref.3).
Reactivity:	Human
Host:	Rabbit
Clonality:	Polyclonal
Immunogen:	Glutathione-S-transferase fusion protein containing the sequence of the immunodominant region of human type XVII collagen / BP180 (aa 507-548)
Specificity:	This antibody detects Human type XVII Collagen / BP180 (aa 507-548).
Formulation:	50mM Tris, pH 7.4 State: Purified State: Lyophilized purified IgG fraction
Reconstitution Method:	Restore in aqua bidest to a concentration of 1 mg/ml.
Purification:	Protein G Chromatography
Conjugation:	Unconjugated
Storage:	Store lyophilized at 2-8°C and reconstituted at -20°C. Avoid repeated freezing and thawing.
Stability:	Shelf life: One year from despatch.
Gene Name:	collagen type XVII alpha 1
Database Link:	<a href="#">Entrez Gene 1308 Human Q9UMD9</a>



[View online »](#)

**Background:**

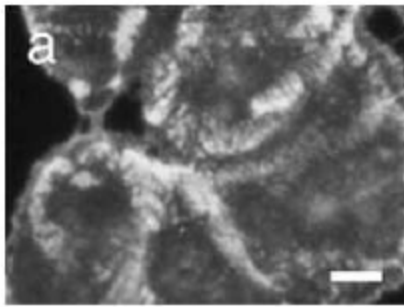
Unlike most collagens, collagen XVII is a transmembrane protein. Collagen XVII is a structural component of hemidesmosomes, multiprotein complexes at the dermal epidermal basement membrane zone that mediate adhesion of keratinocytes to the underlying membrane. Mutations in the gene coding for collagen XVII are associated with both generalized atrophic benign and junctional epidermolysis bullosa. Two homotrimeric forms of type XVII collagen exist. The full length form is the transmembrane protein. A soluble form, referred to as either ectodomain or LAD 1, is generated by proteolytic processing of the full length form. Two transcript variants, one resulting from alternative splicing in the 3' UTR, have been identified for this gene.

**Synonyms:**

COL17A1, BP180, BPAG2, Bullous pemphigoid antigen 2, LAD-1, LABD97

**Protein Families:**

Transmembrane

**Product images:**

Immunocytochemistry of Collagen XVII staining in cultured Human skin squamous carcinoma DJM-1 cells. The cells were grown on glass slides, fixed in 4% paraformaldehyde and incubated with AP02251PU. AP02251PU stains Collagen XVII at hemidesmosomes. Scale bar = 10  $\mu$ m. Hirako Y et al. (2003), *J. Biochem* 133 (2): 197-206.