

Product datasheet for **AP02242SU-N**

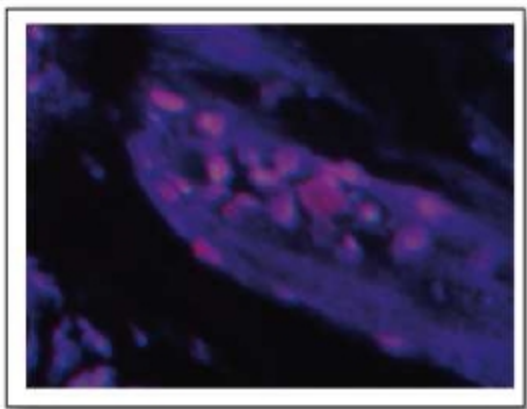
Tuberoinfundibular peptide (PTH2) Rabbit Polyclonal Antibody

Product data:

Product Type:	Primary Antibodies
Applications:	ELISA, IHC, R
Recommended Dilution:	ELISA (1/4000). RIA (1/2000). Immunohistochemistry on Paraffin Sections (1/100).
Reactivity:	Bovine, Canine, Human
Host:	Rabbit
Clonality:	Polyclonal
Immunogen:	Synthetic Human TIP 39 (aa 62-100) KLH conjugated
Specificity:	This antibody detects TIP 39.
Formulation:	State: Serum State: Lyophilized Serum
Reconstitution Method:	Restore in aqua bidest to initial volume.
Conjugation:	Unconjugated
Storage:	Store lyophilized at 2-8°C and reconstituted at -20°C. Avoid repeated freezing and thawing.
Stability:	Shelf life: One year from despatch.
Gene Name:	parathyroid hormone 2
Database Link:	Entrez Gene 113091 Human Q96A98
Background:	Tuberoinfundibular peptide of 39 residues (TIP39) was initially identified as a neurotransmitter and agonist of the PTH2 receptor, which is expressed in the cardiovascular system. Accumulating evidence suggests that TIP39 may be the endogenous ligand of the parathyroid hormone 2 receptor. The vast majority of TIP39 containing neurons are localized in two regions, the subparafascicular area at the thalamic midbrain junction, and the medial paralemnisal nucleus in the rostral pons. In contrast to the restricted localization of TIP39 containing cell bodies, TIP39 containing fibers have a widespread distribution.
Synonyms:	TIPF39, Parathyroid hormone 2



[View online »](#)

Product images:

Immunofluorescence staining of TIP39 in Paraffin Section of Human trachea. The Section was incubated with TIP39 antibody Cat.-No AP02242SU followed by an appropriate secondary antibody coupled to Cy3. The nuclei were visualized with DAPI. Original magnification: x40