

Product datasheet for **AP02235SU-S**

Thymosin beta 4 (TMSB4X) (1-43) Rabbit Polyclonal Antibody

Product data:

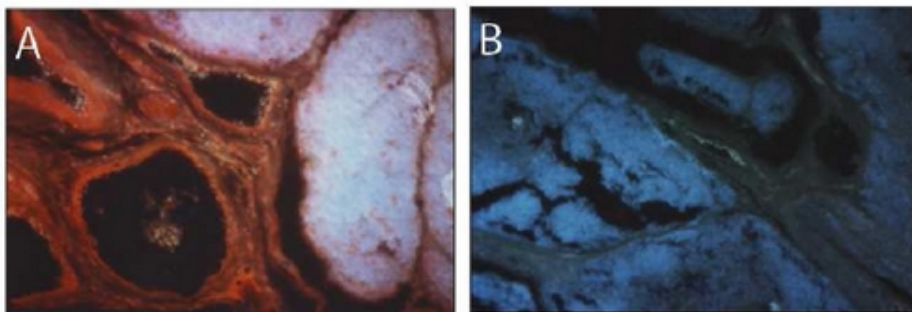
Product Type:	Primary Antibodies
Applications:	ELISA, IF, IHC, WB
Recommended Dilution:	ELISA: 1/4000 (Ref.1). Western Blot (Ref.2). Immunocytochemistry: 1/100 (Ref.2). Immunohistochemistry on Paraffin Sections: 1/100-1/1000 (Ref.2).
Reactivity:	Human
Host:	Rabbit
Clonality:	Polyclonal
Immunogen:	Synthetic Human Thymosin beta-4 (aa 1-43) KLH conjugated
Specificity:	This antibody detects Thymosin beta-4 (aa 1-43). Cross-react with Human Thymosin β 9 and β 10, further Thymosin beta have not been tested for cross-reactivity.
Formulation:	State: Serum State: Lyophilized Serum
Reconstitution Method:	Restore in aqua bidest ot initial volume.
Conjugation:	Unconjugated
Storage:	Store lyophilized at 2-8°C for 6 months or at -20°C long term. After reconstitution store the antibody undiluted at 2-8°C for one month or (in aliquots) at -20°C long term. Avoid repeated freezing and thawing.
Stability:	Shelf life: one year from despatch.
Gene Name:	thymosin beta 4, X-linked
Database Link:	Entrez Gene 7114 Human P62328
Background:	Thymosin beta-4 was shown to be essential for all aspects of coronary vessel development in mice; it stimulates significant outgrowth from quiescent adult epicardial explants, restoring pluripotency and triggering differentiation of fibroblasts, smooth muscle cells, and endothelial cells.



[View online »](#)

Synonyms: T beta-4, TMSB4X, TB4X, THYB4, TMSB4, Seraspenide

Product images:



Immunofluorescence of Thymosin beta-4 staining in Paraffin Sections of juvenile thymus tissue. The section was incubated with AP02235SU (1/100), followed by an appropriate secondary antibody coupled to Cy3. Image A: AP02235SU stains smooth muscle, epithelial and dendritic cells. Original magnification 20x. Image B: Control section. Original magnification 10x.