

## Product datasheet for **AP02233SU-N**

### Thymosin beta 4 (TMSB4X) (1-14) Rabbit Polyclonal Antibody

#### Product data:

Product Type:	Primary Antibodies
Applications:	ELISA, IHC
Recommended Dilution:	<b>ELISA:</b> 1/4000 (Ref.1,2). <b>Dot Blot:</b> 1/500. <b>Immunohistochemistry on Paraffin Sections:</b> 1/200 (Ref.3-7). <b>Immunohistochemistry on Vibratome Sections:</b> 1/100 (Ref.3-7). <b>Immunohistochemistry on Cryo Sections:</b> 1/8000 (Ref.3-7). <b>Immunohistochemistry on Whole-mount:</b> 1/100 (Ref.3-7).
Reactivity:	Human
Host:	Rabbit
Clonality:	Polyclonal
Immunogen:	Synthetic Human Thymosin beta-4 (aa 1-14) KLH conjugated
Specificity:	This antibody detects Thymosin beta-4 (aa 1-14). There was no cross reactivity obtained with Human Thymosin $\alpha$ 1 and Human Thymulin, Tb4 (aa 1-4), Tb9, Tb9 (aa 1-14), AcADKP, ADKP, AcGDKP, AcTDKP, AcSPKD, AcVDKP, BSA.
Formulation:	State: Serum State: Lyophilized Serum
Reconstitution Method:	Restore in aqua bidest to initial volume.
Conjugation:	Unconjugated
Storage:	Store lyophilized at 2-8°C for 6 months or at -20°C long term. After reconstitution store the antibody undiluted at 2-8°C for one month or (in aliquots) at -20°C long term. Avoid repeated freezing and thawing.
Stability:	Shelf life: one year from despatch.
Gene Name:	thymosin beta 4, X-linked
Database Link:	<a href="#">Entrez Gene 7114 Human P62328</a>



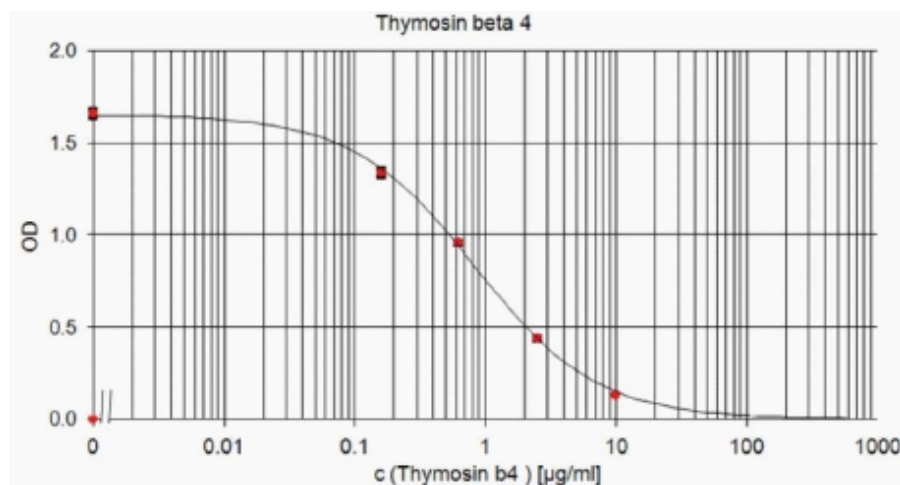
[View online »](#)

**Background:** Thymosin beta-4 was shown to be essential for all aspects of coronary vessel development in mice; it stimulates significant outgrowth from quiescent adult epicardial explants, restoring pluripotency and triggering differentiation of fibroblasts, smooth muscle cells, and endothelial cells.

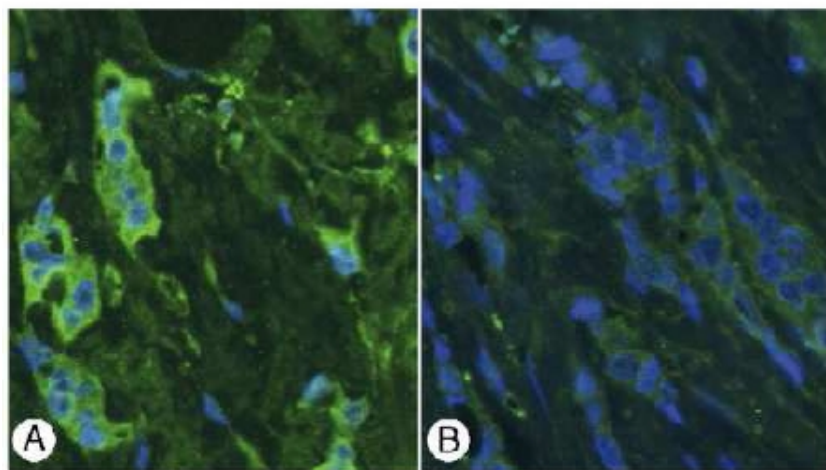
**Synonyms:** T beta-4, TMSB4X, TB4X, THYB4, TMSB4, Seraspenide

**Note:** LocusID 7114

### Product images:



ELISA: Standard curve showing measurement of Thymosin beta-4 in a competitive Immunoassay using AP02233SU. OD was determined at 450 nm. The shown standard curve is for demonstration purposes only and can be influenced by Buffer, incubation conditions or dilution of the conjugate.



Immunohistochemistry using AP02233SU Thymosin beta-4 Antibody: Staining of Paraffin Sections of breast cancer tissue. Sections were incubated with AP02233SU (1/200) for 2 h followed by incubation with Alexa488 Goat anti rabbit antibody (1/400). The section were stained for DNA using bis-Benzimide Image A: AP02233SU stains scattered tumor cells strongly. Image B: Antiserum preabsorbed with the antigen does not stain the tumor tissue. Larsson LI et al. (2007) Hum pathol 38 (1):114-9.