

Product datasheet for **AP02229SU-N**

Thymosin beta 10 (TMSB10) (1-14) Rabbit Polyclonal Antibody

Product data:

| | |
|------------------------|--|
| Product Type: | Primary Antibodies |
| Applications: | ELISA, IF, WB |
| Recommended Dilution: | ELISA (1/1000). Western Blot (Ref.2). Immunocytochemistry (Ref.3). |
| Reactivity: | Human |
| Host: | Rabbit |
| Clonality: | Polyclonal |
| Immunogen: | Synthetic human Thymosin beta-10 (aa 1-14) KLH conjugated |
| Specificity: | This antibody detects Thymosin beta-10 (aa 1-14) and cross reacts with Thymosin beta-10. There were no cross reactivities obtained with Human Thymosin beta-4, Thymosin beta-9, Thymosin beta-15, Thymosin beta-4 peptide (aa 1-4), and Thymosin beta-4 (aa 1-14). |
| Formulation: | State: Serum State: Lyophilized Serum |
| Reconstitution Method: | Restore in aqua bidest to initial volume. |
| Conjugation: | Unconjugated |
| Storage: | Store lyophilized at 2-8°C and reconstituted at -20°C. Avoid repeated freezing and thawing. |
| Stability: | Shelf life: One year from despatch. |
| Gene Name: | thymosin beta 10 |
| Database Link: | Entrez Gene 9168 Human P63313 |



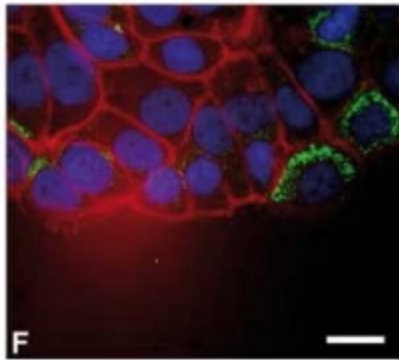
[View online »](#)

Background:

The beta thymosins are a family of related peptides, initially isolated from calf thymus but known to be present in a wide variety of mammalian and other vertebrate cells and tissues. Thymosin beta 4 was the first member of the family to be characterized. Although TMSB4 was initially proposed to be a thymic hormone acting at early stages of T cell maturation, the high concentration of the protein and its mRNA in a number of other tissues and cells, as well as the lack of an identifiable secretory signal sequence, suggested that it had a general function in many cell types. Thymosin beta 10 is closely related in sequence to TMSB4 and is also an actin sequestering protein.

Synonyms:

TMSB10, PTMB10, THYB10, Thymosin beta-9

Product images:

Immunofluorescence of Thymosin beta-10 staining of MCF7 cells in a wound/scratch assay. The cells were fixed, stained with Thymosin beta-10 antibody Cat.-No AP02229SU followed by incubation with Alexa488 Goat anti-Rabbit IgG (1/400). F-Actin and DNA were visualized using Alexa594 Phalloidin and bis-Benzimide respectively. AP02229SU stains the cytoplasm of migrating MCF7 cells at the edge of the wound. Maelan AE et al. (2007). *Histochem Cell Biol* 127 (1): 109-113.