

Product datasheet for **AP02227SU-S**

prothymosin, alpha (PTMA) Rabbit Polyclonal Antibody

Product data:

Product Type:	Primary Antibodies
Applications:	ELISA, IHC
Recommended Dilution:	ELISA: 1/4000. Immunohistochemistry on Frozen Sections: 1/50 (See Ref.1,2). Immunohistochemistry on Paraffin Sections: 1/100-1/1000 (See Ref.1,2).
Reactivity:	Human, Mouse
Host:	Rabbit
Clonality:	Polyclonal
Immunogen:	Synthetic Human Thymosin alpha-1,(aa 2-29) KLH conjugated
Specificity:	This antibody detects Thymosin alpha 1. There was no cross reactivity obtained against Human Thymosin beta-4 and Human Thymulin.
Formulation:	State: Serum State: Lyophilized serum
Reconstitution Method:	Restore in aqua bidest to initial volume
Conjugation:	Unconjugated
Storage:	Store lyophilized at 2-8°C and reconstituted at -20°C. Avoid repeated freezing and thawing.
Stability:	Shelf life: One year from despatch.
Gene Name:	prothymosin, alpha
Database Link:	Entrez Gene 5757 Human P06454
Background:	The thymus gland produces several hormones or hormone-like substances which are derived from a polypeptide precursor containing (in the rat) 113 amino acids and known as prothymosin alpha. A peptide containing 28 amino acid residues, named thymosin alpha 1, was originally isolated from calf thymosin fraction 5 and shown to restore various aspects of immune function in several in vitro and in vivo test systems. Thymosin alpha 1 was subsequently isolated from a similar fraction from human thymosin and reported to have the same amino acid sequence as bovine thymosin alpha 1.



[View online »](#)

Synonyms: PTMA, TMSA, Thymosin alpha-1

Product images:

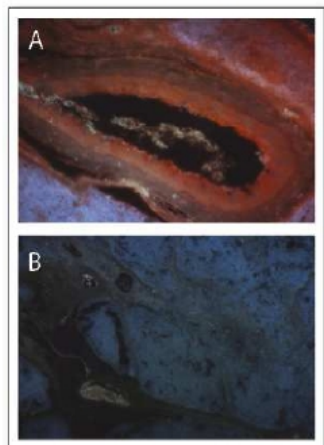


Figure 1. Immunofluorescence of Thymosin alpha-1 staining of Paraffin Section of Human juvenile thymus. A: The section was incubated with AP02227SU (1/100) followed by an appropriate secondary antibody coupled to Cy3. The nuclei were stained with DAPI. Original magnification: x20. B: Control Section without primary antibody. Original magnification: x10.