

Product datasheet for **AP02205SU-S**

Relaxin 2 (RLN2) Rabbit Polyclonal Antibody

Product data:

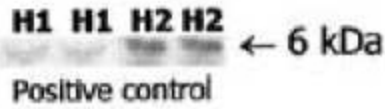
Product Type:	Primary Antibodies
Applications:	ELISA, IHC, IP, R, WB
Recommended Dilution:	RIA: 1/15.000 (Ref.1,3). ELISA: 1/5000 (Ref.2,4,5). Western blot: 1/200 (Ref.4,7). Immunoprecipitation (Ref.7). Immunohistochemistry on Cryosections (Ref.4,6,8). Immunohistochemistry on Paraffin Sections: 1/300 (Ref.4,6,8).
Reactivity:	Human
Host:	Rabbit
Clonality:	Polyclonal
Immunogen:	Purified Human Relaxin-2
Specificity:	This antibody detects Human Relaxin-1 and Relaxin-2, pro-Relaxin-1 and Pro-Relaxin-2. No cross reactivity with Insulin, Zn-Insulin, IGF-1, IGF-2, Spermolaxin, Inhibin alpha-subunit, Inhibin, Seminal-Plasma-Inhibin-like peptide, CG, LH, FSH, Prolactin and Ubiquitin.
Formulation:	State: Serum State: Lyophilized Serum
Reconstitution Method:	Restore in aqua bidest to initial volume.
Conjugation:	Unconjugated
Storage:	Store lyophilized at 2-8°C for 6 months or at -20°C long term. After reconstitution store the antibody undiluted at 2-8°C for one month or (in aliquots) at -20°C long term. Avoid repeated freezing and thawing.
Stability:	Shelf life: one year from despatch.
Gene Name:	relaxin 2
Database Link:	Entrez Gene 6019 Human P04090
Synonyms:	Relaxin H2, Prorelaxin H2, Pro-Relaxin 2, RLXH2, Relaxin A chain, Relaxin B chain



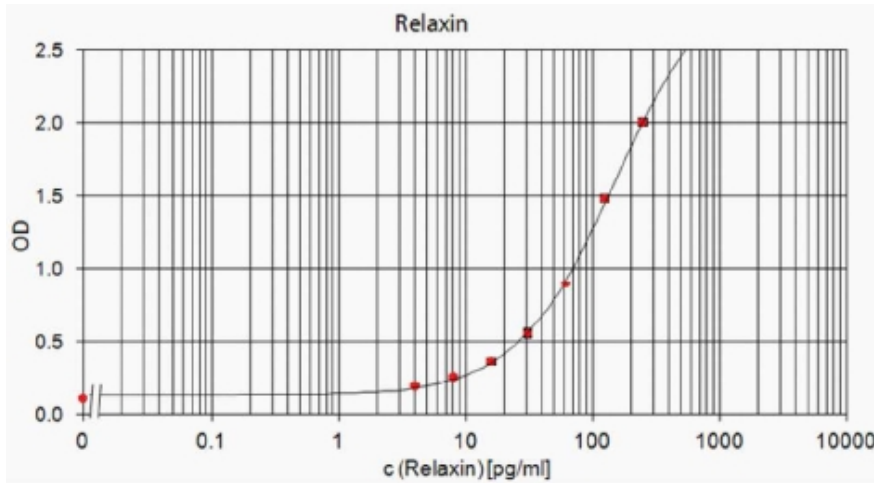
[View online »](#)

Note: LocusID 6019

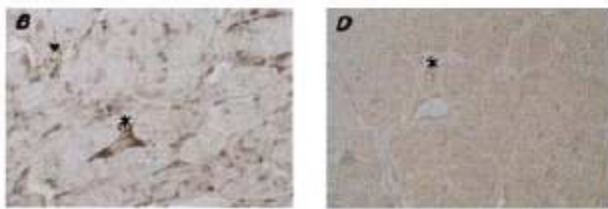
Product images:



ImmunoBlot analysis of Relaxin: Synthetic H1 (100 ng) and Recombinant H2 (500 ng) Relaxin were separated by SDS-PAGE and immunoblotted with AP02205SU relaxin antibody (1/200). Dschietzig T et al. (2001) FASEB Vol 15:2187-95



ELISA: Standard curve showing measurement of Human Relaxin in a Sandwich Immunoassay using AP02205SU as detection antibody. OD was determined at 450 nm. The shown standard curve is for demonstration purposes only and can be influenced by Buffer, incubation conditions or dilution of the conjugate.



Immunohistochemistry using AP02205SU Relaxin Antibody: Staining of Paraffin Sections of left ventricular tissue from a patient demonstrating dilated cardiomyopathy. The section was incubated with AP02205SU (1/300) for 24 h. DAB was used as the chromogen. The section was counterstained with Hematoxylin and Eosin. B: AP02205SU stains myocytes (not shown) and interstitial cells (asterisk) of the Myocardium. D: Control section incubated with serum from non-immunized Rabbit. Dschietzig T et al. (2001) FASEB Vol 15:2187-95