

Product datasheet for **AP02198SU-S**

prothymosin, alpha (PTMA) (75-109) Rabbit Polyclonal Antibody

Product data:

| | |
|------------------------|---|
| Product Type: | Primary Antibodies |
| Applications: | ELISA, IHC, WB |
| Recommended Dilution: | ELISA: 1/2000. Western blot: 2 µg/ml (See Ref.1-3). Immunohistochemistry on Paraffin Sections: 1/1000 (See Ref.3). |
| Reactivity: | Human, Rat |
| Host: | Rabbit |
| Clonality: | Polyclonal |
| Immunogen: | Synthetic Human Prothymosin alpha (aa 75-109) KLH conjugated |
| Specificity: | This antibody detects Prothymosin alpha (aa 75-109). There were no cross reactivities obtained with Human Thymosin beta-4, Human Thymulin and Human Thymosin alpha-1. |
| Formulation: | State: Serum State: Lyophilized serum |
| Reconstitution Method: | Restore in aqua bidest to initial volume |
| Conjugation: | Unconjugated |
| Storage: | Store lyophilized at 2-8°C for 6 months or at -20°C long term. After reconstitution store the antibody undiluted at 2-8°C for one month or (in aliquots) at -20°C long term. Avoid repeated freezing and thawing. |
| Stability: | Shelf life: one year from despatch. |
| Gene Name: | prothymosin, alpha |
| Database Link: | Entrez Gene 5757 Human P06454 |



[View online »](#)

Background:

The thymus gland produces several hormones or hormone-like substances which are derived from a polypeptide precursor containing (in the rat) 113 amino acids and known as prothymosin alpha. A peptide containing 28 amino acid residues, named thymosin alpha 1, was originally isolated from calf thymosin fraction 5 and shown to restore various aspects of immune function in several in vitro and in vivo test systems. Thymosin alpha 1 was subsequently isolated from a similar fraction from human thymosin and reported to have the same amino acid sequence as bovine thymosin alpha 1.

Synonyms:

PTMA, TMSA, Thymosin alpha-1

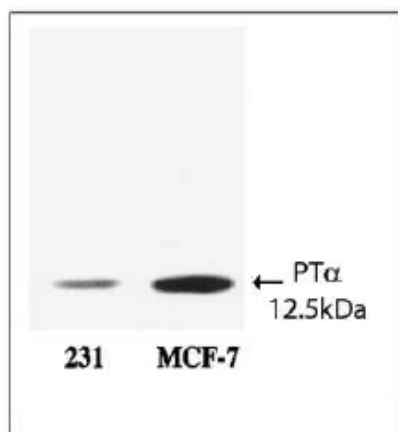
Product images:

Figure 1. Western Blot analysis of AP02198SU specificity. Extracts of 231 and MCF-7 cells were separated by SDS-PAGE and immunoblotted with AP02198SU (2 ug/ml). AP02198SU Detects only Prothymosin alpha in cells extracts. Martini PG et al. (2000) Mol Cell Biol 20 (17):6224-32.

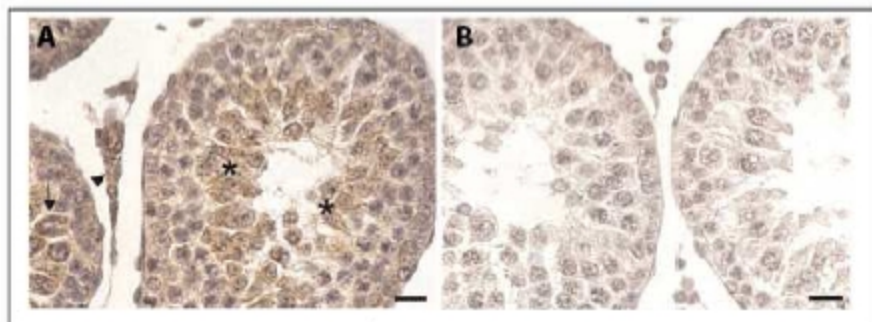


Figure 2. Immunohistochemistry of Prothymosin alpha staining in Paraffin sections of Rat testis. The sections were incubated with AP02198SU (1/1000) and detected using ABC method. The sections were counterstained with hematoxylin. Image A: AP02198SU stains Lydig cells (arrowhead), pachytene primary spermatozooids (arrow), and newly formed spermatids (asterisks). Image B: Control section without primary antibody. Scale Bar = 20 μ m. Ferrara D et al. (2010) J. Cell. Physiol. 224 (2):362-8.