

Product datasheet for **AP02198SU-N**

prothymosin, alpha (PTMA) (75-109) Rabbit Polyclonal Antibody

Product data:

Product Type:	Primary Antibodies
Applications:	ELISA, IHC, WB
Recommended Dilution:	ELISA: 1/2000. Western blot: 2 µg/ml (See Ref.1-3). Immunohistochemistry on Paraffin Sections: 1/1000 (See Ref.3).
Reactivity:	Human, Rat
Host:	Rabbit
Clonality:	Polyclonal
Immunogen:	Synthetic Human Prothymosin alpha (aa 75-109) KLH conjugated
Specificity:	This antibody detects Prothymosin alpha (aa 75-109). There were no cross reactivities obtained with Human Thymosin beta-4, Human Thymulin and Human Thymosin alpha-1.
Formulation:	State: Serum State: Lyophilized serum
Reconstitution Method:	Restore in aqua bidest to initial volume
Conjugation:	Unconjugated
Storage:	Store lyophilized at 2-8°C for 6 months or at -20°C long term. After reconstitution store the antibody undiluted at 2-8°C for one month or (in aliquots) at -20°C long term. Avoid repeated freezing and thawing.
Stability:	Shelf life: one year from despatch.
Gene Name:	prothymosin, alpha
Database Link:	Entrez Gene 5757 Human P06454



[View online »](#)

Background:

The thymus gland produces several hormones or hormone-like substances which are derived from a polypeptide precursor containing (in the rat) 113 amino acids and known as prothymosin alpha. A peptide containing 28 amino acid residues, named thymosin alpha 1, was originally isolated from calf thymosin fraction 5 and shown to restore various aspects of immune function in several in vitro and in vivo test systems. Thymosin alpha 1 was subsequently isolated from a similar fraction from human thymosin and reported to have the same amino acid sequence as bovine thymosin alpha 1.

Synonyms:

PTMA, TMSA, Thymosin alpha-1

Product images:

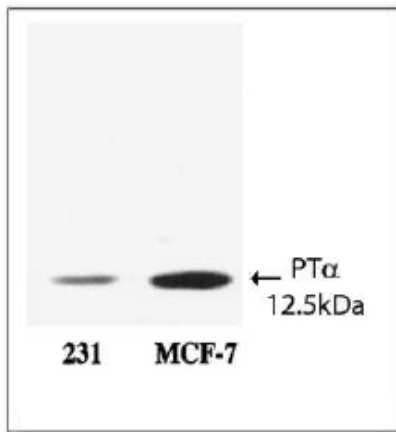


Figure 1. Western Blot analysis of AP02198SU specificity. Extracts of 231 and MCF-7 cells were separated by SDS-PAGE and immunoblotted with AP02198SU (2 ug/ml). AP02198SU Detects only Prothymosin alpha in cells extracts. Martini PG et al. (2000) Mol Cell Biol 20 (17):6224-32.

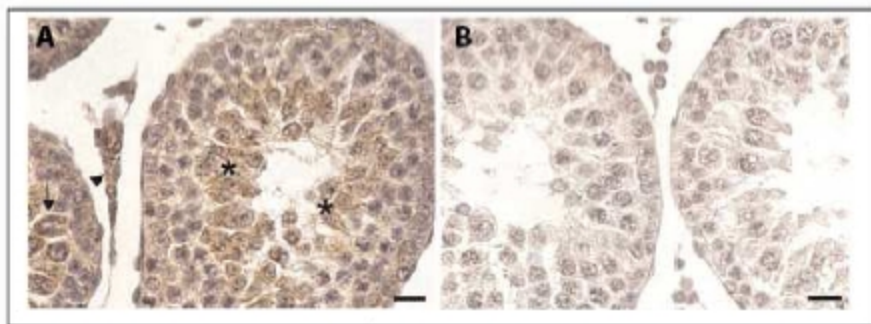


Figure 2. Immunohistochemistry of Prothymosin alpha staining in Paraffin sections of Rat testis. The sections were incubated with AP02198SU (1/1000) and detected using ABC method. The sections were counterstained with hematoxylin. Image A: AP02198SU stains Lydig cells (arrowhead), pachytene primary spermatozooids (arrow), and newly formed spermatids (asterisks). Image B: Control section without primary antibody. Scale Bar = 20 μm. Ferrara D et al. (2010) J. Cell. Physiol. 224 (2):362-8.