

## Product datasheet for **AP02197SU-S**

### Prothymosin, alpha (PTMA) (103-111) Rabbit Polyclonal Antibody

#### Product data:

Product Type:	Primary Antibodies
Applications:	ELISA, IHC
Recommended Dilution:	<b>ELISA:</b> 1/3000 (Ref.1,2) <b>Immunohistochemistry on Paraffin Sections:</b> 1/1000 (Ref.1).
Reactivity:	Human, Rat
Host:	Rabbit
Clonality:	Polyclonal
Immunogen:	Synthetic Human Prothymosin alpha (aa 103-111) KLH conjugated.
Specificity:	This antibody detects Prothymosin alpha (aa 103-111). There were no cross reactivities obtained with Human Prothymosin alpha (aa 1-28) or Parathymosin alpha.
Formulation:	State: Serum State: Lyophilized Serum
Reconstitution Method:	Restore in aqua bidest to 1.0 mg/ml
Conjugation:	Unconjugated
Storage:	Store lyophilized at 2-8°C and reconstituted at -20°C. Avoid repeated freezing and thawing.
Stability:	Shelf life: One year from despatch.
Gene Name:	prothymosin, alpha
Database Link:	<a href="#">Entrez Gene 5757 Human P06454</a>
Background:	The thymus gland produces several hormones or hormone-like substances which are derived from a polypeptide precursor containing (in the rat) 113 amino acids and known as prothymosin alpha. A peptide containing 28 amino acid residues, named thymosin alpha 1, was originally isolated from calf thymosin fraction 5 and shown to restore various aspects of immune function in several in vitro and in vivo test systems. Thymosin alpha 1 was subsequently isolated from a similar fraction from human thymosin and reported to have the same amino acid sequence as bovine thymosin alpha 1.



[View online »](#)

Synonyms: PTMA, TMSA, Thymosin alpha-1

Note: LocusID 5757

### Product images:

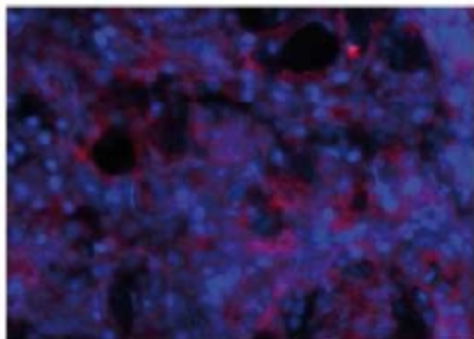


Figure 1. Immunofluorescence Image of Prothymosin alpha staining in Paraffin Sections of Rat Testis. The section was incubated with AP02197SU at 1/1000 dilution followed by an appropriate secondary antibody coupled to Cy3. The nuclei were stained with DAPI. Original magnification: x40