

Product datasheet for **AP02157SU-N**

Parathyroid hormone related protein (PTHrP) (107-111) Rabbit Polyclonal Antibody

Product data:

Product Type:	Primary Antibodies
Applications:	ELISA, IHC
Recommended Dilution:	ELISA: 1/5000. Immunohistochemistry on Paraffin Sections: 1/100.
Reactivity:	Human
Host:	Rabbit
Clonality:	Polyclonal
Immunogen:	Synthetic Human PTHrP (107-111) KLH-conjugated
Specificity:	This antibody detects PTHrP (aa 107-111).
Formulation:	State: Serum State: Lyophilized Serum
Reconstitution Method:	Restore in aqua bidest to initial volume.
Conjugation:	Unconjugated
Storage:	Store lyophilized at 2-8°C and reconstituted at -20°C. Avoid repeated freezing and thawing.
Stability:	Shelf life: One year from despatch.
Gene Name:	parathyroid hormone-like hormone
Database Link:	Entrez Gene 5744 Human P12272



[View online »](#)

Background:

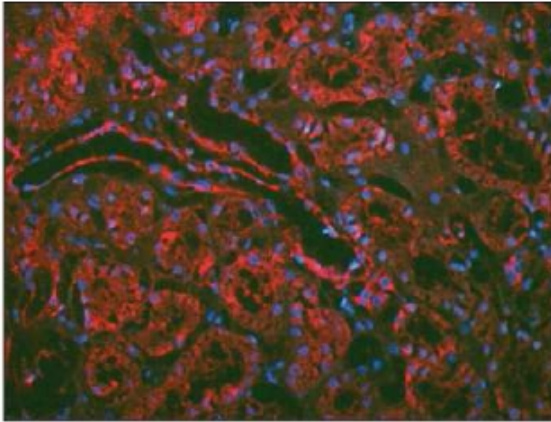
Parathyroid Hormone (PTH), which is also designated parathyrin, is an 84 amino acid single chain peptide that functions to regulate calcium metabolism by raising blood levels of calcium through various mechanisms. PTH stimulates bone formation to increase bone mass and strength in rats and humans. Within the PTH molecule, the essential activity is associated with the first 34 amino acids at the amino-terminus of the molecule. The gene encoding PTH maps to human chromosome 11p15.3-p15.1. Parathyroid hormone-related protein (PTH-rP) is an autocrine factor that is structurally related to PTH yet, unlike PTH, which is synthesized only by the parathyroid cells, PTH-rP is synthesized by several cell types. PTH-rP regulates endochondral bone development and epithelial-mesenchymal interactions during the formation of the mammary glands and teeth. Isolated from the culture medium of a human lung cancer cell line, PTH-rP produces PTH-like effects that are characterized as humoral hypercalcemia of malignancy.

Synonyms:

PTH-rP, Parathyroid hormone related protein, PTHrP, PLP, Parathyroid hormone-like protein

Note:

LocusID 5744

Product images:

Immunofluorescence of PTHrP staining in Paraffin Section of Human kidney. The Section were incubated with PTHrP antibody Cat.-No AP02157SU (1/100) followed by an appropriate secondary antibody coupled to Cy3. The nuclei were stained with DAPI. PTHrP antibody Cat.-No AP02157SU stains renal vessels and tubules. Original magnification: x20.