

Product datasheet for **AP02136SU-S**

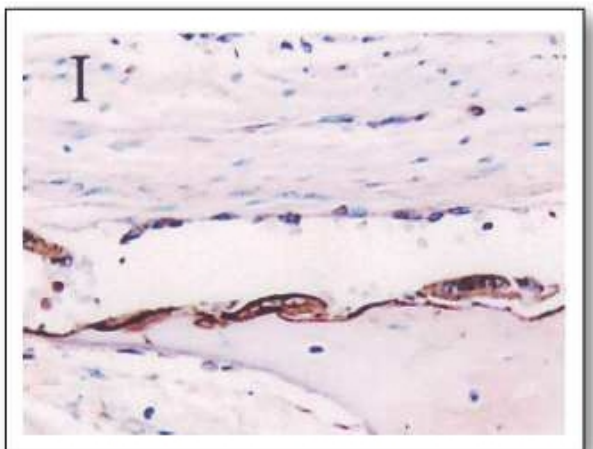
Osteopontin (SPP1) (59-74) Rabbit Polyclonal Antibody

Product data:

Product Type:	Primary Antibodies
Applications:	ELISA, IHC, WB
Recommended Dilution:	ELISA: 1/1000. Western blot. Immunohistochemistry on Paraffin Sections: 1/100-1/1500 (See Ref.2-4)
Reactivity:	Human, Mouse
Host:	Rabbit
Clonality:	Polyclonal
Immunogen:	Synthetic Human Osteopontin (aa 59-74) KLH-conjugated
Specificity:	This antibody detects Human Osteopontin (aa 59-74), Mouse Osteopontin. There were no cross reactivities obtained with Human Osteonectin, and Human Bone Sialoprotein.
Formulation:	State: Serum State: Lyophilized Serum
Reconstitution Method:	Restore in aqua bidest to initial volume.
Conjugation:	Unconjugated
Storage:	Store lyophilized at 2-8°C for 6 months or at -20°C long term. After reconstitution store the antibody undiluted at 2-8°C for one month or (in aliquots) at -20°C long term. Avoid repeated freezing and thawing.
Stability:	Shelf life: one year from despatch.
Gene Name:	secreted phosphoprotein 1
Database Link:	Entrez Gene 6696 Human P10451
Synonyms:	BNSP, OPN, SPP-1, Nephropontin, Uropontin



[View online »](#)

Product images:

Immunohistochemistry staining of Osteopontin in Paraffin Section of Calvaria. The Section was incubated with AP02136SU (1/1500) overnight and detected using ABC vectastain kit. DAB was used as the chromogen. Sections were counter-stained with Mayer's hematoxylin.