

Product datasheet for **AP02128SU-N**

Natriuretic Peptide Receptor A (NPR1) (294-308) Rabbit Polyclonal Antibody

Product data:

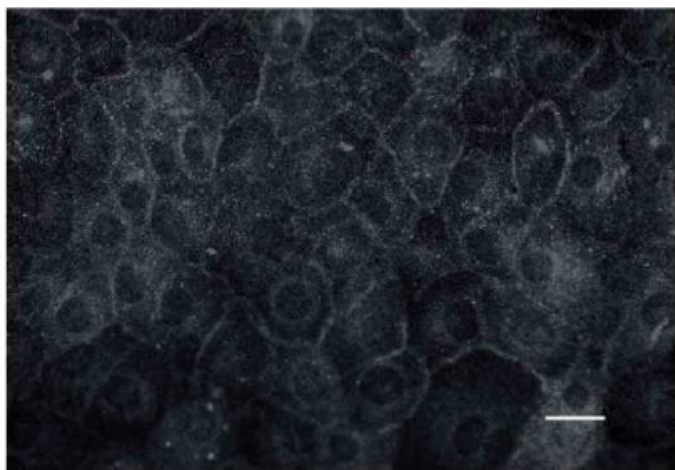
Product Type:	Primary Antibodies
Applications:	IF, IHC, WB
Recommended Dilution:	Western blot: 1/1000-1/5000. Immunocytochemistry (Ref.2). Immunohistochemistry on Paraffin Sections: 1/4000 (Ref.1).
Reactivity:	Human
Host:	Rabbit
Clonality:	Polyclonal
Immunogen:	Synthetic Human NPR-A (aa 294-308) KLH conjugated
Specificity:	This antibody detects Synthetic Human NPR-A (aa 294-308) and cross reactivity with Rat NPR-A
Formulation:	State: Serum State: Lyophilized Serum
Reconstitution Method:	Restore in aqua bidest to initial volume.
Conjugation:	Unconjugated
Storage:	Store lyophilized at 2-8°C and reconstituted at -20°C. Avoid repeated freezing and thawing.
Stability:	Shelf life: One year from despatch.
Gene Name:	natriuretic peptide receptor 1
Database Link:	Entrez Gene 4881 Human P16066
Background:	Natriuretic peptide receptor A is a receptor for atrial natriuretic peptide, and has guanylate cyclase activity on binding of ANP. There seem to be at least three ANP receptors: two with guanylate cyclase activity(ANP-A and ANP-B) and one (ANP-C) which is probably responsible for the clearance of ANP from the circulation without a role in signal transduction. ANP-A Belongs to the adenylyl cyclase class-4/guanylyl cyclase family and contains 1 protein kinase-like domain.
Synonyms:	ANP receptor A, ANP-A, NPR-A, Guanylate cyclase, GC-A, Atrial natriuretic peptide A-type receptor



[View online »](#)

Note: LocusID 4881

Product images:



Immunocytochemistry of NPR-A staining in cultured Rat inner medullary collecting duct (IMCD) cells. The cells were grown on glass slides and fixed in 4% paraformaldehyde. The cells were incubated with AP02128SU for 90 min, followed by an appropriate secondary antibody coupled to Alexa488. Scale bar = 20 μ m. Klokkers J et al. (2009)Am. J. Physiol. Renal. Physiol. 297 (3): F693-703.