

## Product datasheet for **AP02111PU-N**

### Laminin 5 (LAMB3) Rabbit Polyclonal Antibody

#### Product data:

Product Type:	Primary Antibodies
Applications:	IHC, WB
Recommended Dilution:	<b>Western blot</b> (Ref.1,2,5,7) <b>Immunoprecipitation</b> (Ref.3) <b>Immunocytochemistry</b> (Ref.5,7) <b>Immunohistochemistry on Cryosections</b> (Ref.3,4,6,7).
Reactivity:	Human, Bovine
Host:	Rabbit
Clonality:	Polyclonal
Immunogen:	Human Laminin 5. Laminin 5 consists of three chains: Alpha-3, Beta-3 and Gamma-2
Specificity:	This antibody detects Human and bovine total Laminin 5.
Formulation:	PBS State: Purified State: Lyophilized purified IgG fraction from Serum.
Reconstitution Method:	Restore in 100µl aqua bidest
Purification:	Protein G Chromatography.
Conjugation:	Unconjugated
Storage:	Store lyophilized at 2-8°C for 6 months or at -20°C long term. After reconstitution store the antibody undiluted at 2-8°C. Avoid repeated freezing and thawing.
Stability:	Shelf life: one year from despatch.
Gene Name:	laminin subunit beta 3
Database Link:	<a href="#">Entrez Gene 3914 Human Q13751</a>



[View online »](#)

**Background:**

Laminins are basement membrane components thought to mediate the attachment, migration and organization of cells into tissues during embryonic development by interacting with other extracellular matrix components. laminin 5 is a complex glycoprotein composed of three subunits (alpha, beta, and gamma). Laminin 5 is thought to be involved in cell adhesion, signal transduction and differentiation of keratinocytes. Mutations in this gene have been identified as the cause of Herlitz type junctional epidermolysis bullosa. Alternatively spliced transcript variants encoding different isoforms have been identified.

**Synonyms:**

LAMB3, LAMNB1, Laminin subunit beta-3, Laminin 5, Laminin B1k chain, Kalinin B1 chain

**Note:**

LocusID 3911

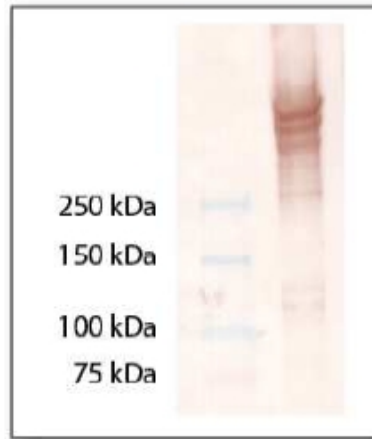
**Product images:**

Figure 1. Western Blots analysis of Laminin 5. Cell culture Supernatant of Human juvenile Foreskin fibroblasts was separated by SDS-PAGE. Laminin 5 was detected by incubation with AP02111PU antibody at 1/300 for 2 hours and a secondary antibody coupled to peroxidase with DAB as the substrate.

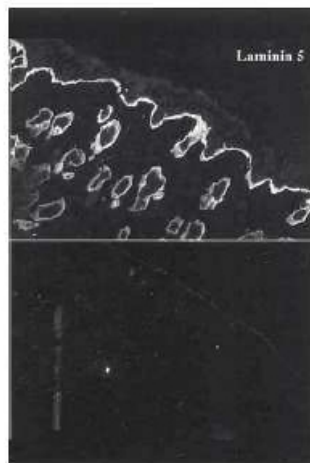


Figure 2. Immunohistochemistry of Laminin 5 staining in Cryosection of fetal calf skin. AP02111PU antibody stains the basal keratinocytes and the outer root sheath cells of hair follicles (upper panel), preimmune serum (lower panel). Amano S et al. (2000). J. Bilo. Chem. Vol275 No.30: 22728-22735.