

## Product datasheet for **AP02095SU-N**

### Galectin 2 (LGALS2) Rabbit Polyclonal Antibody

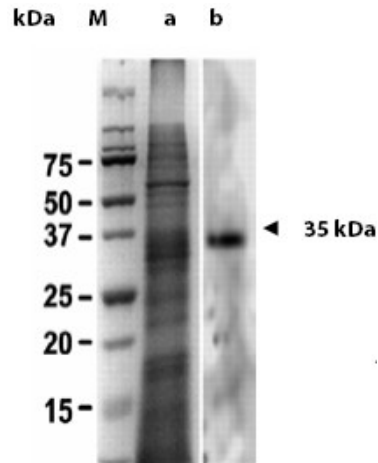
#### Product data:

Product Type:	Primary Antibodies
Applications:	ELISA, IF, IHC, IP, WB
Recommended Dilution:	ELISA (1/75,000). <b>Western blot</b> (1/7,500). <b>Immunoprecipitation:</b> 1/50. <b>Immunohistochemistry on Resin Sections</b> (1/750).
Host:	Rabbit
Clonality:	Polyclonal
Immunogen:	Recombinant Galectin-2 from <i>Suberites domuncula</i> .
Specificity:	This antibody detects Galectin-2
Formulation:	State: Serum State: Lyophilized serum
Reconstitution Method:	Restore in aqua bidest to initial volume.
Conjugation:	Unconjugated
Storage:	Store lyophilized at 2-8°C for 6 months or at -20°C long term. After reconstitution store the antibody undiluted at 2-8°C for one month or (in aliquots) at -20°C long term. Avoid repeated freezing and thawing.
Stability:	Shelf life: one year from despatch.
Gene Name:	galectin 2
Database Link:	<a href="#">P05162</a>
Background:	Galectins are a family of soluble beta-galactoside-binding animal lectins that modulate cell-to-cell adhesion and cell-to-extracellular matrix (ECM) interactions and play a role in tumor progression, pre-mRNA splicing and apoptosis. Galectin 2, , also known as LGALS2, Lactose-binding lectin 2 or HL14, is structurally closely related to galectin 1, but is expressed primarily in the gastrointestinal tract. Galectin 2 induces apoptosis in activated T cells and binds to the cytokine lymphotoxin-alpha (LTA) with possible implications in risk of myocardial infarction.
Synonyms:	LGALS2, Lactose-binding lectin 2, S-Lac lectin 2, HL14



[View online »](#)

## Product images:



The figure shows SDS-PAGE and WESTERN BLOTTING: (a) SDS-Page of crude extract of *Suberites domuncula* (b) Size-separated proteins were transferred to membranes and reacted with antibody. (M) Molecular mass marker proteins

