

## Product datasheet for **AP02094SU-S**

### Transglutaminase 3 (TGM3) Rabbit Polyclonal Antibody

#### Product data:

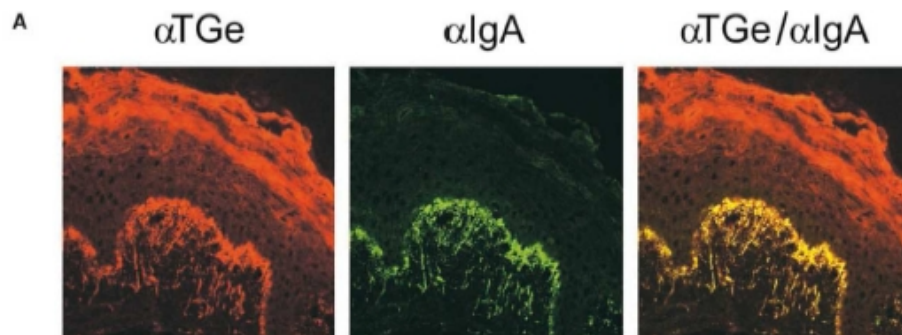
Product Type:	Primary Antibodies
Applications:	ELISA, IF, IHC
Recommended Dilution:	<b>ELISA</b> (Ref.1) <b>Immunofluorescence.</b> <b>Immunohistochemistry on Cryosections:</b> 1/100-1/3200 (Ref.1,2).
Reactivity:	Human
Host:	Rabbit
Clonality:	Polyclonal
Immunogen:	Recombinant Human epidermal Transglutaminase [TGe]
Specificity:	This antibody detects Epidermal Transglutaminase [TGe].
Formulation:	State: Serum State: Lyophilized Serum
Reconstitution Method:	Restore in aqua bidest to initial volume.
Conjugation:	Unconjugated
Storage:	Store lyophilized at 2-8°C and reconstituted at -20°C. Avoid repeated freezing and thawing.
Stability:	Shelf life: One year from despatch.
Gene Name:	transglutaminase 3
Database Link:	<a href="#">Entrez Gene 7053 Human Q08188</a>
Background:	Transglutaminases are enzymes that catalyze the crosslinking of proteins by epsilon-gamma glutamyl lysine isopeptide bonds. While the primary structure of transglutaminases is not conserved, they all have the same amino acid sequence at their active sites and their activity is calcium-dependent. The protein encoded by this gene consists of two polypeptide chains activated from a single precursor protein by proteolysis. The encoded protein is involved the later stages of cell envelope formation in the epidermis and hair follicle. [provided by RefSeq]
Synonyms:	TGase, TGE
Note:	LocusID 7053



[View online »](#)

Protein Families: Druggable Genome

**Product images:**



Immunofluorescence of TGe staining in Cryosection of Human skin of dermatitis herpetiformis patient. The section was incubated with AP02094SU (1/100) followed by incubation with Cy3-labeled Goat anti-Rabbit antibody. This antibody stains the epidermis and aggregates within the dermal papillae (Red). TGe colocalizes with IgA (Green) in these precipitates. Sardy M et al. (2002) J Exp Med 195 (6): 747-757.