

## Product datasheet for **AP02051SU-S**

### Bone Sialoprotein (IBSP) (201-211) Rabbit Polyclonal Antibody

#### Product data:

Product Type:	Primary Antibodies
Applications:	ELISA, IF, WB
Recommended Dilution:	<b>ELISA</b> (1/1000). <b>Western Blot</b> (1/7000). <b>Immunocytochemistry</b> (1/100).
Reactivity:	Human
Host:	Rabbit
Clonality:	Polyclonal
Immunogen:	Synthetic Human Bone Sialoprotein (aa 201-211)
Specificity:	This antibody detects Human Bone Sialoprotein (aa 201-211). Cross reactivity with Bone Sialoprotein.
Formulation:	State: Serum State: Lyophilized Serum
Reconstitution Method:	Restore in aqua bidest to initial volume.
Conjugation:	Unconjugated
Storage:	Store lyophilized at 2-8°C and reconstituted at -20°C. Avoid repeated freezing and thawing.
Stability:	Shelf life: One year from despatch.
Gene Name:	integrin binding sialoprotein
Database Link:	<a href="#">Entrez Gene 3381 Human P21815</a>
Background:	The protein encoded by the Bone Sialoprotein gene is a major structural protein of the bone matrix. It is synthesized by skeletal-associated cell types, including hypertrophic chondrocytes, osteoblasts, osteocytes, and osteoclasts, and it constitutes approximately 12% of the noncollagenous proteins in human bone. The only extraskeletal site of its synthesis is the trophoblast. This protein binds to calcium and hydroxyapatite via its acidic amino acid clusters, and mediates cell attachment through an RGD sequence that recognizes the vitronectin receptor.

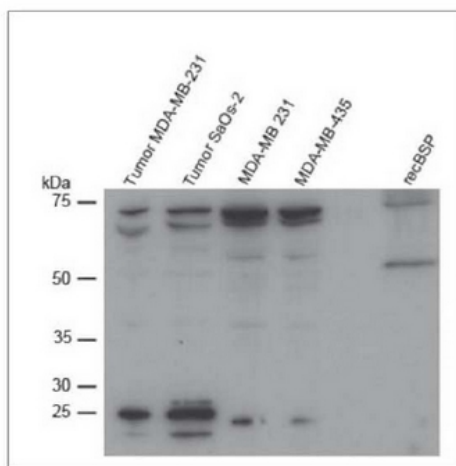


[View online »](#)

Synonyms: Bone sialoprotein II, BSP II, IBSP, BNSP

Note: LocusID 3381

### Product images:



Western Blot analysis of BSP expression in different cell lines. Cell lysates and recombinant BSP were separated by SDS-PAGE and immunoblotted with AP02051SU-S/N (1/7000).