

Product datasheet for **AP02034SU-N**

Helicobacter pylori Goat Polyclonal Antibody

Product data:

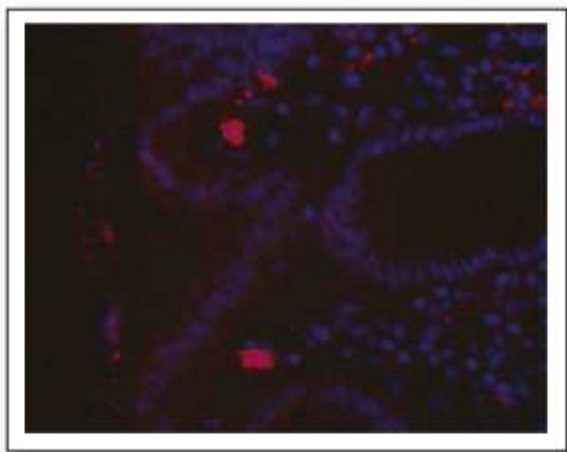
Product Type:	Primary Antibodies
Applications:	ELISA, IHC
Recommended Dilution:	ELISA. Immunohistochemistry Paraffin Sections: 1/100.
Reactivity:	Helicobacter pylori
Host:	Goat
Clonality:	Polyclonal
Immunogen:	Helicobacter pylori (H. pylori)
Specificity:	This antibody detects <i>Helicobacter Pylori</i> .
Formulation:	State: Serum State: Lyophilized serum
Reconstitution Method:	Restore in aqua bidest to initial volume.
Conjugation:	Unconjugated
Storage:	Store lyophilized at 2-8°C for 6 months or at -20°C long term. After reconstitution store the antibody undiluted at 2-8°C for one month or (in aliquots) at -20°C long term. Avoid repeated freezing and thawing.
Stability:	Shelf life: one year from despatch.
Background:	The spiral shaped bacterium <i>Helicobacter pylori</i> is strongly associated with inflammation of the stomach and is also implicated in the development of gastric malignancy. H. pylori is known to cause peptic ulcers and chronic gastritis in human. It is associated with duodenal ulcers and may be involved in development of adenocarcinoma and low-grade lymphoma of mucosa associated lymphoid tissue in the stomach. More recently this bacterium has also been implicated with a number of vascular disorders including heart disease. It is not clear how H. pylori is transmitted or why some patients become symptomatic while others do not. The bacteria are most likely spread from person to person through fecal-to-oral or oral-to-oral routes. Possible environmental reservoirs include contaminated water sources. Serological tests that measure specific H. pylori IgG antibodies can determine if a person has been infected although these methods do have drawbacks and limitations.



[View online »](#)

Synonyms: H. pylori

Product images:



Immunofluorescence staining of H. pylori in Paraffin Section of gastric biopsy sample. The Section was incubated with H. pylori antibody Cat.-No AM02034SU followed by an appropriate secondary antibody coupled to Cy3. The nuclei were visualized with DAPI. Original magnification: x40